



Custom Dynamics® Dynamic A/W Engine Guard LEDs Installation Instructions

We thank you for purchasing the Custom Dynamics® Dynamic A/W Engine Guard LEDs. Our products utilize the latest technology and high quality components to ensure you the most reliable service. We offer one of the best warranty programs in the industry and we back our products with excellent customer support, if you have questions before or during installation of this product please call Custom Dynamics® at 1(800) 382-1388.

Part Numbers: CD-CB-AW-TKE-B CD-CB-AW-TKE-C

Package Contents:

- Dynamic A/W Engine Guard LED (2)
- BCM Adapter Harness (2)
- 9" Black Cable Ties (10)
- 6" Chrome Cable Ties (10)
- Foam Mounting Pad (4)
- Hex Key Wrench (1)
- Instructions (1)

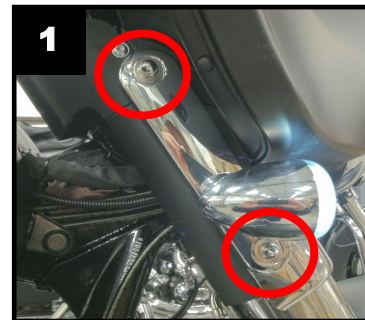


Fits: 2014-2025 Harley-Davidson® Tri Glide (FLHTCUTG) and 2020-2022 CVO™ Tri Glide (FLHTCUTGSE). Also compatible on 2015-2025 Harley-Davidson® Freewheeler (FLRT) and 2023-2025 Road Glide 3 (FLTRT) models equipped with after-market engine guards.

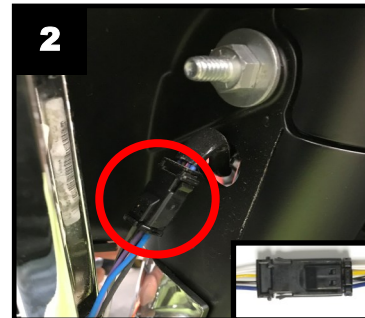
Note: Fits 1.25" engine guards. Requires 5" of straight (not curved) mounting area.

Installation:

1. Remove seat and disconnect the negative battery cable from the battery.
2. Remove the 1/2" nuts that secure the turn signal assembly to the fork shown in **Figure 1**.



3. Pull assembly away from the fork to reveal the black wiring connector as shown in **Figure 2**.



4. Unplug the connector by pushing in on the tab located on the male side of the connection. Shown in **Figure 2**. Push the tab and pull apart both sides at the same time. Remove the turn signal assembly from the motorcycle completely.



ATTENTION

Please read all Information below before Installation

Warning: Disconnect negative battery cable from battery; refer to owner's manual. Failure to do so may result in electrical shock, injury, or fire. Secure negative battery cable away from positive side of battery and all other positive voltage sources on vehicle.

Safety First: Always wear appropriate safety gear including safety glasses when performing any electrical work. It is highly recommended that safety glasses be worn throughout this installation process. Be sure vehicle is on level surface, secure and cool.

Important: This product is designed and intended for use as auxiliary lighting only. It is NOT intended to replace any original equipment lighting installed on the vehicle and should not be used for that purpose. This product must be wired so that it does not interfere with any original equipment lighting.

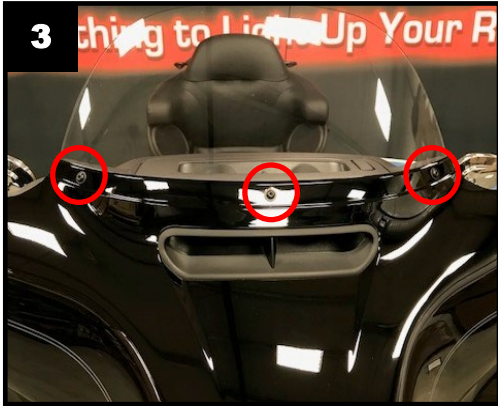
Warning: Drilling the engine guard and running the wires internally in the engine guard is **NOT** recommended as it weakens the integrity of the engine guard.

Questions? Email: info@CustomDynamics.com or Call us at: 1 (800) 382-1388 M-TH 8:30AM-5:30PM / FR 9:30AM-5:30PM EST

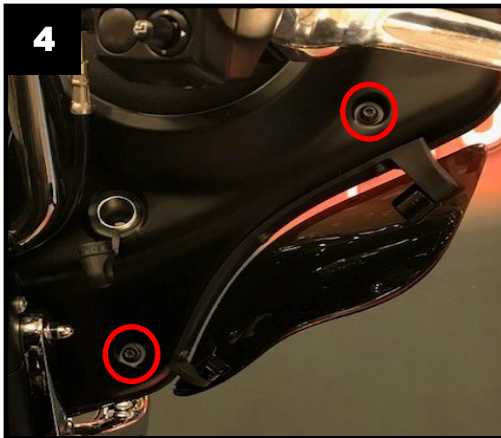
Installation Instructions - Page 2

Installation Continued:

- Repeat steps 1 and 2 on the opposing side turn signal assembly.
- Remove the 3 top T27 Torx Bolts from the outer fairing as shown in **Figure 3**. Remove the windshield and store it in a safe place for reinstallation later.

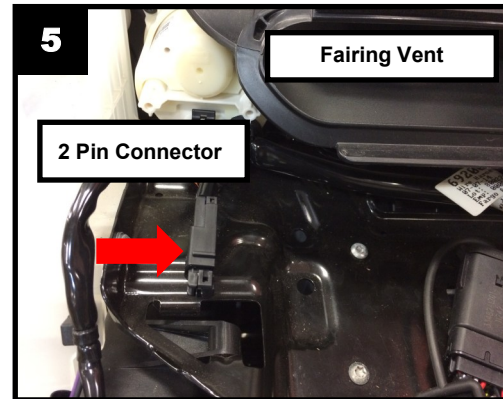


- Reinstall the center T27 Torx Bolt only that was removed in Step 6. Lightly tighten the center bolt to secure the fairing while removing the remaining 4 inner fairing bolts.
- Remove the 2 T27 Torx bolts from the left and the right side of the inner fairing as shown in **Figure 4**. Save the bolts for reinstallation.

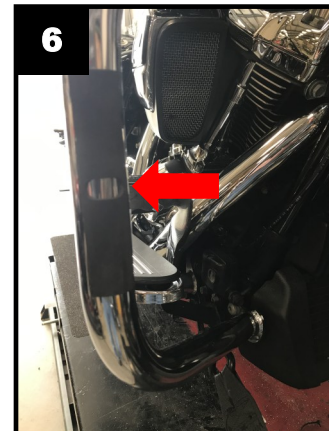


- While standing in front of the motorcycle and holding the fairing, remove the center outer fairing T27 Torx bolt and pull the fairing slightly away from the motorcycle.
- With the fairing slightly pulled away from the motorcycle, disconnect the connector from the headlamp. Lay the fairing on a protected flat surface to prevent damage.
- Using one of the BCM Adapter Harnesses, plug the black male connector of the pass-through into the female connector of the turn signal wiring harness.

- Push the female 4 pin JAE connector of the pass-through harness into the hole in the fork. Plug the 4 pin JAE connector from the turn signal into the pass-through harness, then reinstall the turn signal onto the fork frame and secure with the original nuts. Repeat for the other side.
- On the left side BCM Adapter Harness, plug the 2 pin female connector into the male 2 pin connector of the right side BCM Adapter Harness.
- Locate the 2 pin fairing connector to the lower left (looking at the fairing) of the fairing vent. Shown in **Figure 5**.



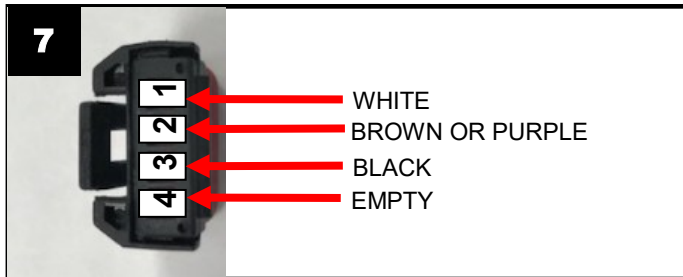
- Remove the connector plug from the 2 pin fairing connector on the motorcycle by pushing the center tab in and pulling the plug out. Save the plug for reinstallation later.
- Plug the BCM Adapter Harnesses into the fairing 2 pin fairing connector, ensure that it snaps in. Make sure to reinstall the plug removed in the previous step into the right side BCM Adapter Harness pass-through connector.
- Using the supplied Cable Ties, secure the Dynamic A/W Engine Guard LEDS wiring harnesses to prevent the wires from being cut, frayed or pinched.
- Determine your desired mounting location. Using the provided Foam Mounting Pads, remove backing and apply the Foam Mounting Pads to the forward front and back of the engine guard at the mounting location as shown in **Figure 6**.



Installation Instructions - Page 3

Installation Continued:

19. Disassemble the Dynamic A/W Engine Guard LEDs and mount to the engine guard. Place the back side of the housing on the engine guard. Using the supplied hardware, secure the front housing to the back housing. **Note: The wiring harness must lay in the notch of the front Dynamic A/W Engine Guard LED housing to prevent it from being pinched or damaged during installation.**
20. Route the wiring harness from each Dynamic A/W Engine Guard LEDs to the BCM Adapter Harnesses in the fairing.
21. Install the provided JAE connectors onto the pre-pinned wires from each Dynamic A/W Engine Guard by pushing the pins into the connector ports shown in **Figure 7** (locking tab oriented at top of JAE connector). Pins should snap in place and not pull back out of connector when installed correctly. Connect to the corresponding (Left or Right) BCM Adapter Harness male JAE connector.



22. Using the supplied Cable Ties, secure the Dynamic A/W Engine Guard Harness to prevent the wires from being cut, frayed or pinched.
23. Reinstall the fairing and windshield in the reverse order that it was removed. **Note: The 4 inner fairing bolts are two different lengths! The 2 longer bolts go in the top holes and the 2 shorter bolts go in the bottom holes of the inner fairing.**
24. Reconnect the negative battery cable to the battery and reinstall the seat.
25. Test the Custom Dynamics® Dynamic A/W Engine Guard LEDs for proper operation.

Note: If you're experiencing a rapid flash on your turn signal dash indicator, you may need to sync the BCM (Body Control Module) and clear the trouble codes. To sync the BCM, perform the following steps:

- 1) Turn ignition on, but do not start the motorcycle.
- 2) Turn on 4 way hazards by pressing the hazard button on the controls. Count 10 flashes and deactivate.
- 3) Turn on 4 way hazards for another 10 flashes and deactivate.
- 4) Clear Diagnostic Trouble Codes (DTC's).
- 5) The dash turn signal indicators should no longer be rapid flashing.