



Custom Dynamics® Dynamic Lower Fairing Inserts Installation Instructions

We thank you for purchasing the Custom Dynamics® Dynamic Lower Fairing Inserts. Our products utilize the latest technology and high quality components to ensure you the most reliable service. We offer one of the best warranty programs in the industry and we back our products with excellent customer support, if you have questions before or during installation of this product please call Custom Dynamics® at 1(800) 382-1388.

Part Numbers: CD-LF-AW-B

Package Contents:

- Dynamic Lower Fairing Inserts (pair)
- BCM Adapter Harness (2)
- 6" Cable Ties (12)
- Cable Tie Holders (10)
- Instructions (1)

Fitment: 2014-2019 Harley-Davidson® Ultra Classic (FLHTCU), 2015-2016 Ultra Classic Low (FLHTCUL), 2014-2024 Ultra Limited (FLHTK), 2015-2019 Ultra Limited Low (FLHTKL), 2014-2021 CVO™ Ultra Limited (FLHTKSE), 2016-2019 Road Glide Ultra (FLTRU), 2020-2024 Road Glide Limited (FLTRK), 2015-2016 CVO™ Road Glide Ultra (FLTRUSE), 2022-2023 Road Glide Limited CVO™ (FLTRKSE), 2015-2019 Street Glide CVO™ (FLHXSE), 2014-2025 Tri Glide Ultra (FLHTCUTG) and 2020-2022 Tri Glide CVO™ (FLHTCUTGSE).

Batwing Fitment Instructions Page 1

Road Glide Fitment Instructions Page 4

Replaces OEM 57100151 (Left) & 57100152 (Right). Also compatible on models with aftermarket Harley-Davidson® fairing lowers (57100257DH), Advanblack Rushmore Lower Vented Fairings and Saddle Tramp® Lower Fairing Speaker Assembly (Item# 2330-0248).



Batwing Installation:

1. Remove the 1/2" nuts that secure the turn signal assembly to the fork shown in **Figure 1**. Pull assembly away from the fork to reveal the black wiring connector as shown in **Figure 2**.



2. Unplug the connector by pushing in on the tab located on the male side of the connection as shown in **Figure 3**. Push the tab and pull apart both sides at the same time. Remove the turn signal assembly from the motorcycle completely.



ATTENTION

Please read all Information below before Installation

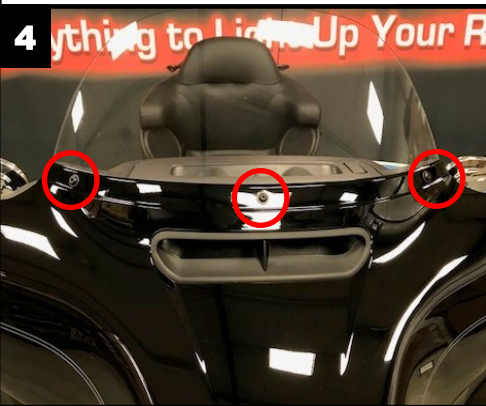
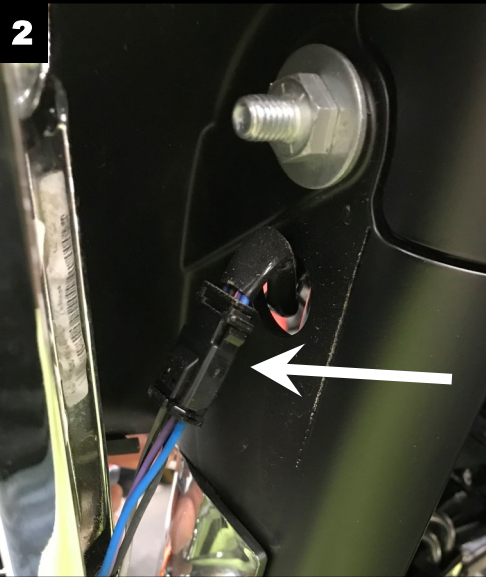
Warning: Disconnect negative battery cable from battery; refer to owner's manual. Failure to do so may result in electrical shock, injury, or fire. Secure negative battery cable away from positive side of battery and all other positive voltage sources on motorcycle.

Safety First: Always wear appropriate safety gear including safety glasses when performing any electrical work. It is highly recommended that safety glasses be worn throughout this installation process. Be sure motorcycle is on level surface, secure and cool.

Important: This product is designed and intended for use as auxiliary lighting only. It is NOT intended to replace any original equipment lighting installed on the motorcycle and should not be used for that purpose. This product must be wired so that it does not interfere with any original equipment lighting.

Questions? Email: info@CustomDynamics.com or Call us at: 1 (800) 382-1388 M-TH 8:30AM-5:30PM / FR 9:30AM-5:30PM EST

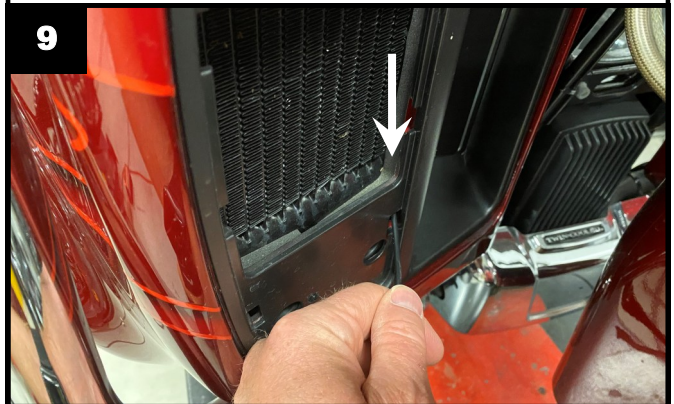
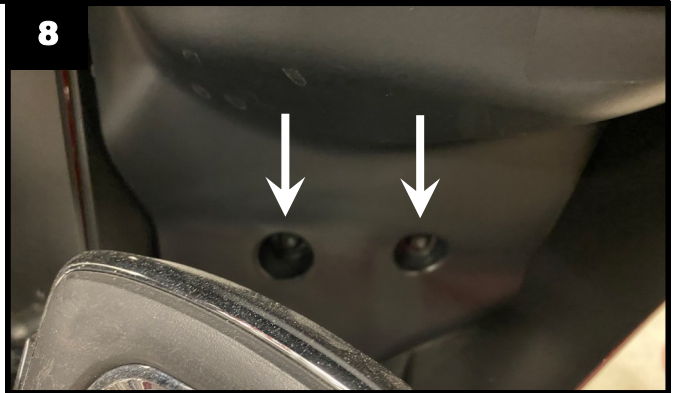
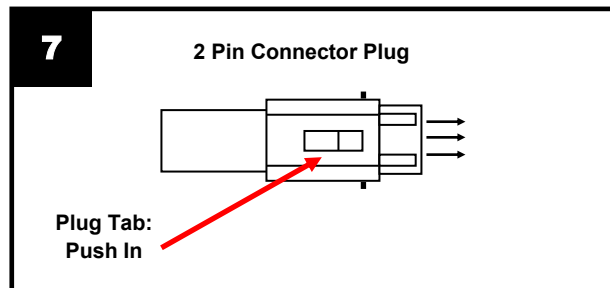
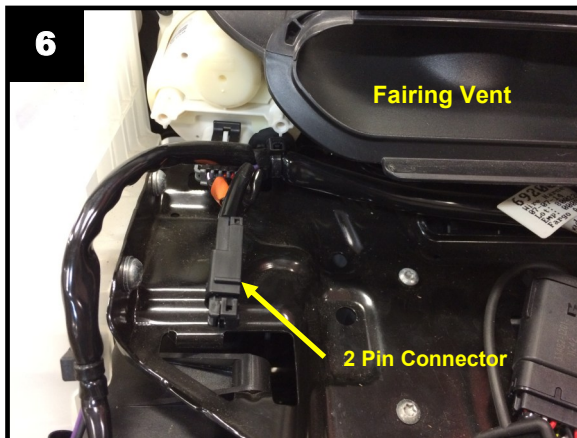
Installation Instructions - Page 2



3. Repeat steps 1 and 2 on the opposing side turn signal assembly.
4. Remove the 3 top T27 Torx Bolts from the outer fairing as shown in **Figure 4**. Remove the windshield and store it in a safe place for reinstallation later.
5. Reinstall the center T27 Torx Bolt only that was removed in Step 4. Lightly tighten the center bolt to secure the fairing while you remove the remaining 4 inner fairing bolts.
6. Remove the 2 T27 Torx bolts from the left and the right side of the inner fairing as shown in **Figure 5**. Save the bolts for reinstallation.
7. While standing in front of the motorcycle and holding the fairing, remove the center outer fairing T27 Torx bolt and pull the fairing slightly away from the motorcycle.
8. With the fairing slightly pulled away from the motorcycle, disconnect the connector from the headlight. Lay the fairing on a protected flat surface to prevent damage.
9. Using one of the BCM Adapter Harnesses, Identify the black male and female 4 pin JAE connectors with the blue wire running between them. Plug the black male JAE connector, with the blue wire, into the female connector of the turn signal main wiring harness.
10. Push the black female 4 pin JAE connector, with the blue wire of the BCM Adapter Harness through the hole in the front fork going out to the turn signal bracket.
11. Plug the black 4 pin female JAE connector, with the blue wire from the BCM Adapter Harness into the turn signal harness, then reinstall the turn signal bracket onto the front fork and secure with the original nuts. Repeat for the other side.
12. Connect the white 2 pin female connector of the left side BCM Adapter Harness into the white male 2 pin connector of the right side BCM Adapter Harness.
13. Locate the black 2 pin fairing Parts and Accessory connector to the lower left (looking at the fairing) of the fairing vent. Shown in **Figure 6**.
14. Remove the black connector plug from the 2 pin fairing P&A connector on the motorcycle by pushing the center tab in and pulling the plug out. Save the plug for reinstallation later. Shown in **Figure 7**.
15. Plug the white male 2 pin connector of the left BCM Adapter Harnesses into the fairing black 2 pin fairing P&A connector, ensure that it snaps in.
16. Install the black plug removed in the step 14 into the white female 2 pin connector.
17. Remove the grills from the lower fairings with a flat non-marking tool.
18. Remove the 2 cover mounting screws from the back of the lower fairing. Save the screws for reassembly. Shown in **Figure 8**.
19. Route the Dynamic Lower Fairing Inserts wiring harness through the front side of the lower fairing as shown in **Figure 9**.
20. Gently pull back on the inside of the rear lower fairing cover and pull the Dynamic Lower Fairing Inserts wiring harness through the lower fairing as shown in **Figures 10 & 11**.

Installation Instructions - Page 3

21. Align the mounting tabs on the front of the lower fairing and snap the Dynamic Lower Fairing Inserts into place.
22. Route the wiring harness from each Dynamic Lower Fairing Insert to the BCM Adapter Harnesses in the fairing.
23. Using the provided Cable Ties and Cable Tie Holders, secure the Dynamic Lower Fairing harnesses to prevent wires from being cut, frayed, or pinched.
24. Reinstall the fairing and windshield in the reverse order that it was removed. **Note: The 4 inner fairing bolts are two different lengths!** The 2 longer bolts go in the top holes and the 2 shorter bolts go in the bottom holes of the inner fairing.
25. Reconnect the negative battery cable to the battery and reinstall the seat.
26. Perform a BCM Sync by turning the ignition **ON**. Turn 4 way hazards on and count 10 flashes and deactivate. Turn on 4 way hazards for another 10 flashes and deactivate. Turn ignition **OFF** then back **ON**, turn 4 way flashes and deactivate. **Note: After performing a BCM Sync, turn ignition ON and check dash indicators operation and make sure they are not Rapid Flashing.**
27. Test operation of Dynamic Lower Fairing Inserts and front lighting.



Installation Instructions - Page 4

Road Glide® Installation:

1. Remove the 4 windshield fasteners, shown in **Figure 12**. Lift the windshield up to remove. Store the windshield in a safe place to prevent damage.

12



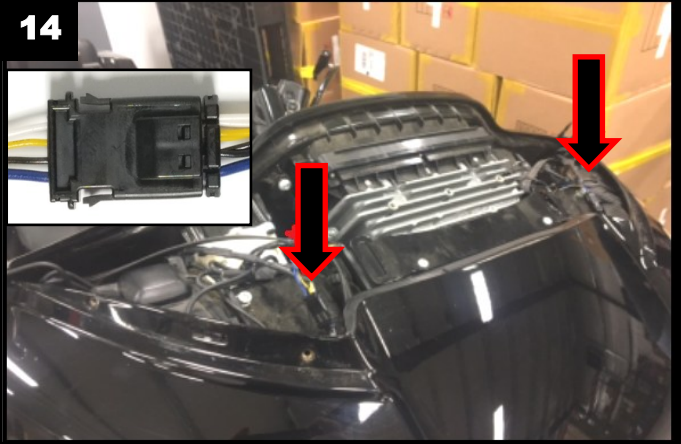
2. Once the windshield fasteners and windshield are removed, you will need to remove the vent. The vent is secured to the fairing by clips. Position yourself in the front of the motorcycle and lift straight up on the vent to release. Shown in **Figure 13**.

13



3. Locate both the left and right 3 pin turn signal connectors. Press down on the releasing tab of the JAE connector to disconnect. Shown in **Figure 14**.

14



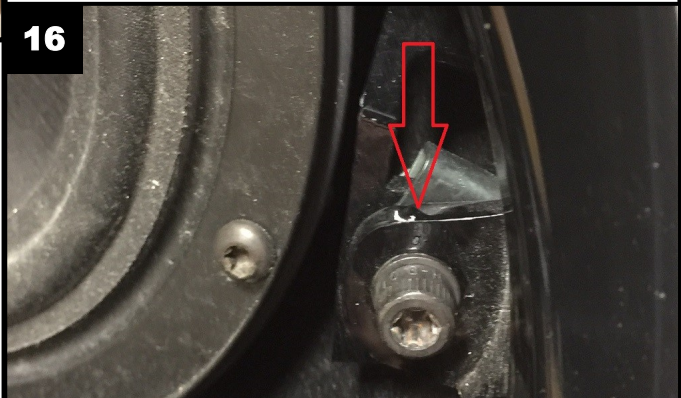
4. Remove the 3/16" socket Allen head bolts from the outside of each turn signal housing. Shown in **Figure 15**.

15



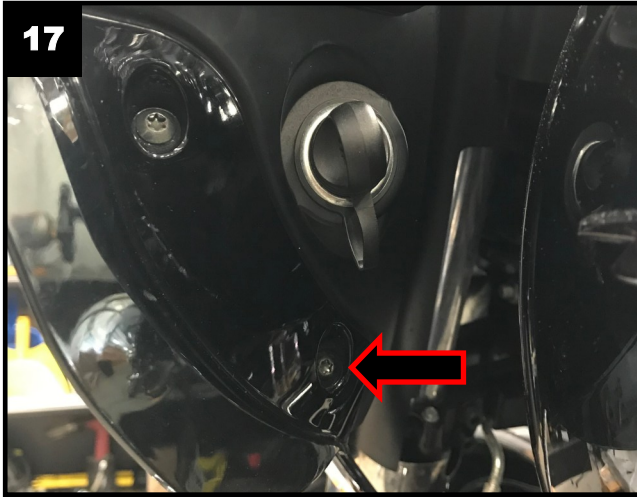
5. Remove both left and right speaker grilles on the inner fairing.
6. Once the speaker grilles are removed, Locate and remove the T-30 torx bolts in each corner of the speaker housing. Shown in **Figure 16**.

16



Installation Instructions - Page 5

7. Locate and remove the lower T-25 screw on each side of the inner fairing. Shown in **Figure 17**.



8. Remove the outer fairing and set to side.
9. Using one of the BCM Adapter Harnesses, Identify the black male and female 4 pin JAE connectors with the blue wire running between them. Plug the black male JAE connector, with the blue wire, into the female connector of the turn signal main wiring harness.
10. Leave the black female 4 pin JAE connector, with the blue wire, of the BCM Adapter Harness disconnected until the fairing is reinstalled. Repeat for the other side.
11. Connect the white 2 pin female connector of the left side BCM Adapter Harness into the white male 2 pin connector of the right side BCM Adapter Harness.
12. Locate the 2 pin black fairing P&A connector in the upper left of the fairing. Shown in **Figure 18**.
13. Remove the connector plug from the black 2 pin fairing connector by pushing the center tab in and pulling the plug out. Save the plug for reinstallation later. Shown in **Figure 7**.



14. Plug the left white 2 Pin Connector on the left BCM Adapter Harnesses into the fairing black 2 pin fairing P&A connector. Then install the plug removed in the previous step into the right side BCM Adapter Harness white female 2 pin connector.
15. Remove the grills from the lower fairings with a flat non marking tool.
16. Remove the 2 cover mounting screws from the back of the lower fairing. Save the screws for re-assembly. Shown in **Figure 8**.
17. Route the Dynamic Lower Fairing Insert wiring harness through the front side of the lower fairing as shown in **Figure 9**.
18. Gently pull back on the inside of the rear lower fairing cover and pull the Dynamic Lower Fairing Inserts wiring harness through the lower fairing as shown in **Figures 10 & 11**.
19. Align the mounting tabs on the front of the lower fairing and snap the Dynamic Lower Fairing Inserts into place.
20. Route the wiring harness from each Dynamic Lower Fairing Insert to the BCM Adapter Harnesses in the fairing.
21. Using the provided Cable Ties and Cable Tie Holders, secure the Dynamic Lower Fairing Insert harnesses to prevent the wires from being cut, frayed, or pinched.
22. Reinstall the fairing and windshield in the reverse order that it was removed.
23. Reconnect the negative battery cable to the battery and reinstall the seat.
24. Perform a BCM Sync by turning the ignition **ON**. Turn 4 way hazards on and count 10 flashes and deactivate. Turn on 4 way hazards for another 10 flashes and deactivate. Turn ignition **OFF** then back **ON**, turn 4 way flashes and deactivate.
Note: After performing a BCM Sync, turn ignition ON and check dash indicators operation and make sure they are not Rapid Flashing.
25. Test operation of Dynamic Lower Fairing Inserts and front lighting.