



Custom Dynamics® Indian® LED License Plate Frame Installation Instructions

We thank you for purchasing the Custom Dynamics® Indian® LED License Plate Frame. Our products utilize the latest technology and high quality components to ensure you the most reliable service. We offer one of the best warranty programs in the industry and we back our products with excellent customer support, if you have questions before or during installation of this product please call Custom Dynamics® at 1(800) 382-1388.

Part Numbers: CD-LP-IND-B CD-LP-IND-C

Package Contents:

- License Plate Frame with Mount (1)
- Washers (2)
- Plate Frame Screws (4)
- 8" Cable Ties (4)
- Instructions (1)

Fits: 2015-2025 Indian® Roadmaster, 2018 Roadmaster Classic, 2020-2021 & 2025 Roadmaster Elite, 2016-2025 Springfield, 2018-2019 Springfield Dark Horse, 2015-2019 Chief, Chief Classic, 2015-2020 Chief Dark Horse, 2015-2020 Chief Vintage, 2021 Vintage, 2015-2018 Chieftain, Chieftain Dark Horse and 2018-2020 Chieftain Classic.



Please read all Information below before Installation

Warning: Disconnect negative battery cable from battery; refer to owner's manual. Failure to do so may result in electrical shock, injury, or fire. Secure negative battery cable away from positive side of battery and all other positive voltage sources on motorcycle.

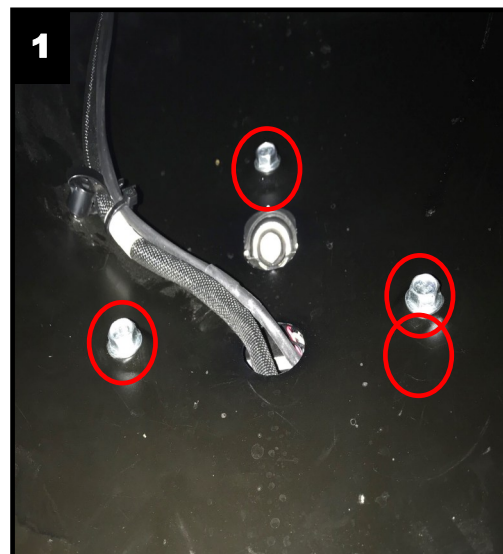
Safety First: Always wear appropriate safety gear including safety glasses when performing any electrical work. It is highly recommended that safety glasses be worn throughout this installation process. Be sure motorcycle is on level surface, secure and cool.

Important: This product is designed and intended for use as auxiliary lighting only. It is NOT intended to replace any original equipment lighting installed on the motorcycle and should not be used for that purpose. This product must be wired so that it does not interfere with any original equipment lighting.



Installation:

1. Remove motorcycle seat and disconnect the negative battery cable from the battery. Consult your owners manual if unsure of this process.
2. Remove the 3 bolts securing the taillight assembly to the rear fender as shown in **Figure 1**.

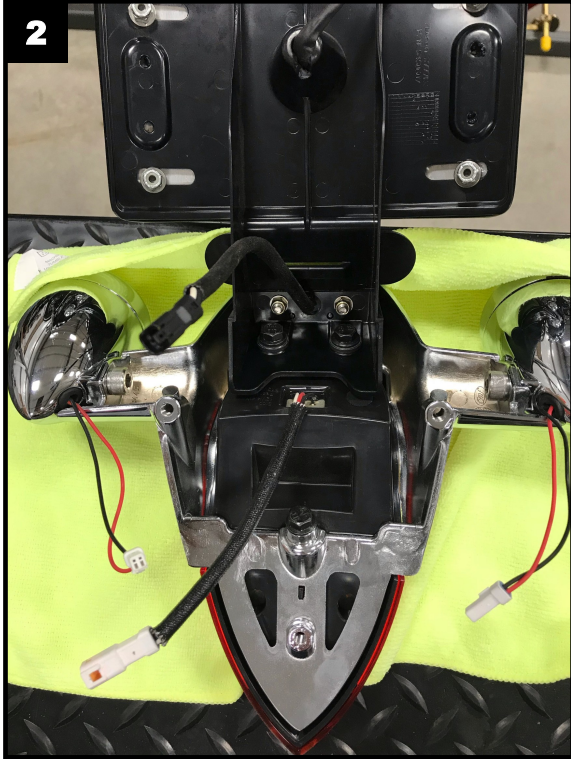


Questions? Email: Info@CustomDynamics.com or Call us at: 1 (800) 382-1388 M-TH 8:30AM-5:30PM / FR 9:30AM-5:30PM EST

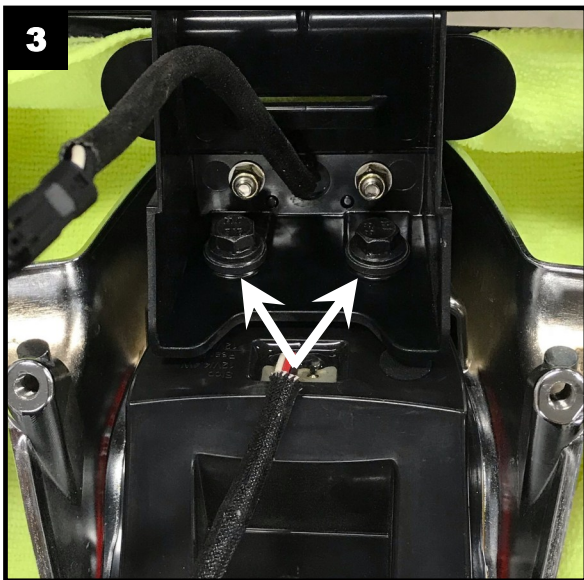
Installation Instructions - Page 2

Installation Continued:

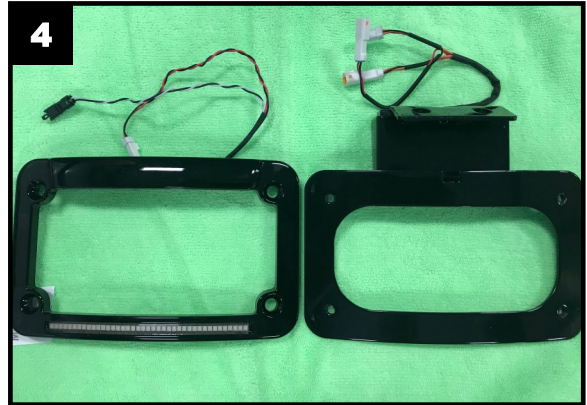
3. Disconnect the 4 Taillight assembly electrical connections and lay the Taillight assembly facedown on a scratch free surface as shown in **Figure 2**.



4. Remove the 2 bolts and spacers securing the stock license plate mount to the taillight housing. Retain the bolts and spacers as they will be used for reassembly. Shown in **Figure 3**.



5. Separate the plate frame from the mounting bracket as shown in **Figure 4**.



6. Shape the radius of the license plate to match the radius of the plate frame. Trim the License Plate as necessary to prevent the License Plate Frame wires from being cut, frayed or pinched. Shown in **Figure 5**.



7. Route the wires of the license plate frame through the hole in the mounting bracket as shown in **Figure 6**. Using the 4 supplied license plate frame screws, install the license plate and frame onto the mounting bracket.



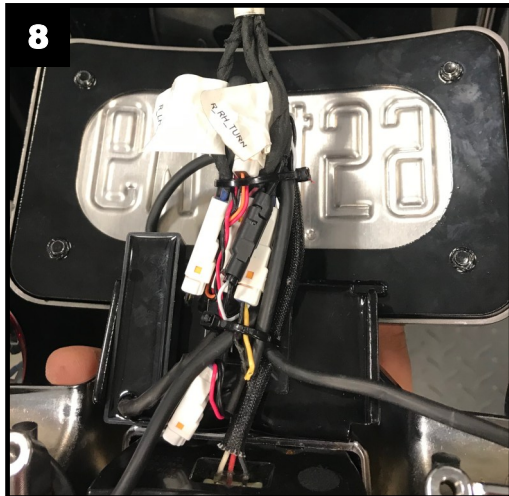
Installation Instructions - Page 3

Installation Continued:

8. Install the mounting bolts with spacers (Removed in Step 4) and the supplied washers into the mounting bracket as shown in **Figure 7**.



9. Install the mounting bracket ,with license plate frame installed, onto the taillight housing.
10. Reconnect the 4 taillight assembly electrical connections and secure the wires to the back of the assembly as shown in **Figure 8**.



11. Reinstall the taillight assembly to the rear fender.
12. Reconnect the negative battery cable to the battery and reinstall the seat.
13. Test the Custom Dynamics® Indian® LED License Plate Frame for proper operation.