



Custom Dynamics® Luggage Rack LED Light Bar Installation Instructions

We thank you for purchasing the Custom Dynamics® Luggage Rack LED Light Bar. Our products utilize the latest technology and high quality components to ensure you the most reliable service. We offer one of the best warranty programs in the industry and we back our products with excellent customer support, if you have questions before or during installation of this product please call Custom Dynamics® at 1(800) 382-1388.

Part Number: CD-LR-04-R CD-LR-04-S

Package Contents:

- Luggage Rack LED Light Bar (1)
- Luggage Rack Adapter Harness (1)
- Allen Head Bolt with Washer (2)
- Male JAE Connector (1)
- Nylon Wire Guide (1)
- Wire Clips (4)
- Cable Ties (6)
- Foam Mounting Pads (2)
- Instructions (1)

Fitment: 2015-2025 Harley-Davidson® Freewheeler (FLRT) and 2023-2025 Road Glide 3 (FLRTR).

Requires OEM or add-on Tour Pak with Harley-Davidson® Air Wing Tour Pak Luggage Rack (PN 50300097).



Installation:

1. Remove motorcycle seat. Consult your owners manual if unsure of process.
2. Disconnect the negative battery cable from the battery.
3. On the left side of the bottom rear rail, remove the black rubber plug from the hole. Shown in **Figure 1**.
4. Insert loop end of the supplied Nylon Wire Guide through the forward hole in the rail and out through the rear hole. Allow the straight end to remain outside the forward hole. Shown in **Figure 2 on Page 2**.



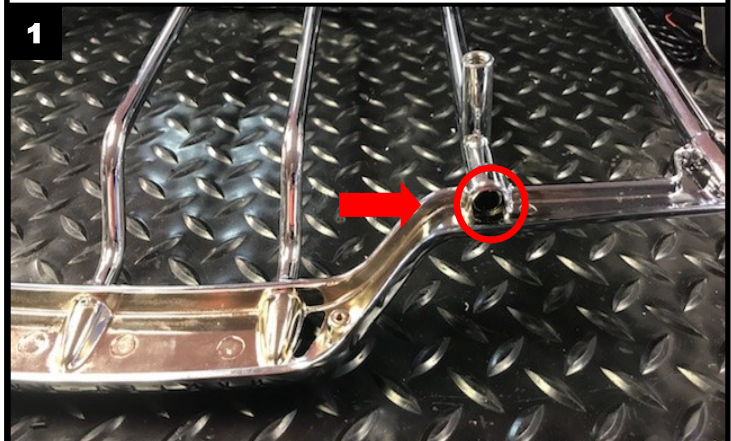
Please read all Information below before Installation

Warning: Disconnect negative battery cable from battery; refer to owner's manual. Failure do to so may result in electrical shock, injury, or fire. Secure negative battery cable away from positive side of battery and all other positive voltage sources on motorcycle.

Important: Motorcycle should be secured on a level surface for installation.

Important: This product is designed to be used specifically with the Harley-Davidson® brand Air Wing Luggage Rack (P/N 79179-08 or 53000063).

Notice: Do NOT use thread locker such as Loc-Tite™ with this product. It will weaken the plastic at the screw holes causing cracks and will void the warranty.

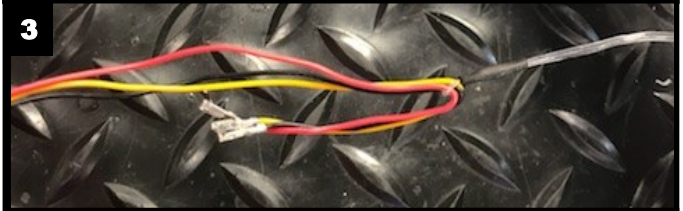


Questions? Email: info@CustomDynamics.com or Call us at: 1 (800) 382-1388 M-TH 8:30AM-5:30PM / FR 9:30AM-5:30PM EST

Installation Instructions - Page 2

Installation Continued:

5. Loop approximately 2" of the Luggage Rack LED Light Bar wires through the closed end of the Nylon Guide Wire. Fold wires to secure around the Nylon Guide Wire to enable threading the wires through the rack tubing. Shown in **Figure 3**.
6. Carefully pull the straight end of the Nylon Guide Wire to draw the LED Assembly wires through the rail and out the forward hole. Detach the Luggage Rack LED Light Bar wires from the Nylon Guide Wire after the wires have been pulled through the front hole. Shown in **Figure 4**.
7. Install the 2 foam pads on to the top surface of the Luggage Rack LED Light Bar. Shown in **Figure 5**.
8. Align the Luggage Rack LED Light Bar to the underside of the Air Wing Luggage Rack rear crossbar. Shown in **Figure 6**.
9. Using a 9/64 Allen wrench, secure the LED Assembly to the Air Wing Luggage Rack using the supplied Allen Head Bolts and Washers.
10. Thread the wire from the Luggage Rack LED Light Bar through the mounting holt in the Trike Trunk lid.
11. Route the Luggage Rack LED Light Bar wiring harness towards the front center corner of the Trike Trunk lid. Secure loose wires with supplied Wire Clips. Shown in **Figure 7**.



Installation Instructions - Page 3

Installation Continued:

12. Drill a 1/4" hole in the plastic plate located in the front inside of Trike Trunk and route the Luggage Rack LED Light Bar wiring harness out of the Tour Pak and under the seat. Shown in **Figure 8**.
13. Located the factory rear lighting wiring harness connectors under the seat. Shown in **Figure 9**.
14. Plug in the included Adapter Harness to the rear lighting wiring harness. Shown in **Figure 10**. **Note: If installing this product with a Magic Strobes™ Brake Light Flasher, the provided Adapter Harness should be plugged in down stream of the Magic Strobes™ module to enable brake flashing on the Luggage Rack LED Light Bar.**
15. Route the female JAE connector from the Adapter Harness through the 1/4" hole in the front inside of the Trike Trunk. (Where the 1/4" hole was drilled in Step 12).
16. Align the provided Male JAE Connector with the female plug (**do not plug in completely**).
17. Match up color of the pre-pinned wires from the Luggage Rack LED Light Bar with the female JAE connector of the Luggage Rack Adapter Harness in the following configuration: Yellow to Blue, Red to Red, Black to Black. Insert each pinned wire into the corresponding Male JAE Connector port. Pins should snap in place and not pull back out of male connector when installed correctly.
18. Use supplied Cable Ties to secure wires from being cut, frayed, or pinched.
19. Reconnect the negative battery cable to the negative of the battery.
20. Reinstall the motorcycle seat.
21. Test Custom Dynamics® Luggage Rack LED Light Bar for proper operation.

