



Custom Dynamics® Color Changing LED Rock Light Kit Installation Instructions

We thank you for purchasing the Custom Dynamics® Color Changing LED Rock Light Kit. Our products utilize the latest technology and high quality components to ensure you the most reliable service. We offer one of the best warranty programs in the industry and we back our products with excellent customer support, if you have questions before or during installation of this product please call Custom Dynamics® at 1(800) 382-1388.

Part Numbers: CD-ROCK-KIT

Package Contents:

- LED Rock Light with Mounting Hardware (4)
- ProGLOW™ Bluetooth Controller (1)
- End Cap (4)
- 4' Wire Extension (2)
- 8' Wire Extension (2)
- 10' Wire Extension (2)
- Cable Ties (40)
- Instructions (1)



Fits: Universal, 12VDC negative ground systems, SXS & UTV.

Installation:

1. Connect the Red battery terminal of the Bluetooth Controller Power Harness and the Blue Battery Monitor wire from the controller to the Positive terminal of the battery. Connect the Black battery terminal of the Bluetooth Controller Power Harness to the Negative battery terminal.
2. Check the switch on the Power Harness to confirm it is not illuminated. If the switch on the Power Harness is illuminated, press the switch button so the switch is not illuminated.
3. Plug the power harness into the ProGLOW™ Bluetooth Controller power port.
4. **(Optional Step)** Connect the Black Brake Monitor wire on the Bluetooth Controller to the vehicle brake circuit for Brake Alert feature. Connection must be made before any type of brake light flasher module. If not used, cap wire to prevent shorting. (Lights will change to Solid Red when brake is engaged, then return to normal program function when released.)
5. Select hidden locations to mount the LED Rock Lights to provide the best coverage of your choice. When selecting mounting locations, keep in mind the wire routing to either the controller or to the next LED Rock Light.
6. Mount the Rock Light to the vehicle using the supplied mounting hardware. Optional Magnetic Insert for mounting can be purchased separately, shown in **Figure 10 on Page 3**.
7. Using the supplied Wire Extensions, route the LED Rock Light harnesses to the controller or to the another LED Rock Light. Shown in the **Diagram on Page 3** for a typical layout and controller connections.
8. Mount the ON/OFF switch on the Power Harness in a discrete accessible location using the supplied 3M tape. Clean the mounting area and switch with denatured alcohol and allow to dry before applying the 3M tape.
9. Use the supplied 3M tape to secure the ProGLOW™ Bluetooth Controller in an area away from heat, water, and any moving parts. Clean the mounting area and controller denatured alcohol and allow to dry before applying the 3m Tape.
10. Secure the wires using the supplied Cable Ties to prevent the wires from being cut, frayed or pinched.
11. Download the ProGLOW™ Bluetooth App from either the Google Play Store or the iPhone App Store depending on your smart phone device.



ATTENTION

Please read all Information below before Installation

Warning: Disconnect negative battery cable from battery; refer to owner's manual. Failure to do so may result in electrical shock, injury, or fire. Secure negative battery cable away from positive side of battery and all other positive voltage sources on vehicle.

Safety First: Always wear appropriate safety gear including safety glasses when performing any electrical work. It is highly recommended that safety glasses be worn throughout this installation process. Be sure vehicle is on level surface, secure and cool.

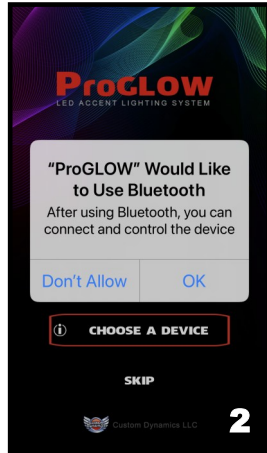
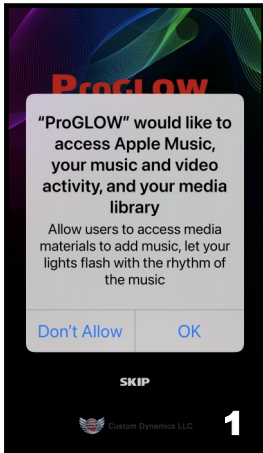
Important: This product is designed and intended for use as auxiliary lighting only. It is NOT intended to replace any original equipment lighting installed on the vehicle and should not be used for that purpose. This product must be wired so that it does not interfere with any original equipment lighting.

Important: Ambient install temperature must be 60 degrees F or higher. Allow 24 hours for tape to cure before washing or prolonged use of vehicle.

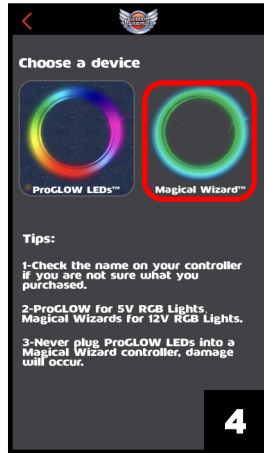
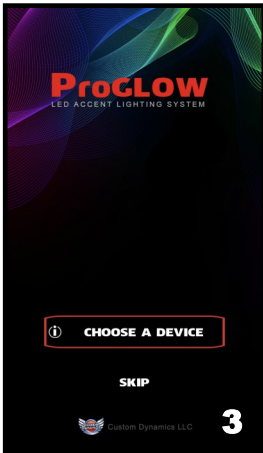
Questions? Email: info@CustomDynamics.com or Call us at: 1 (800) 382-1388 M-TH 8:30AM-5:30PM / FR 9:30AM-5:30PM EST

Installation Instructions - Page 2

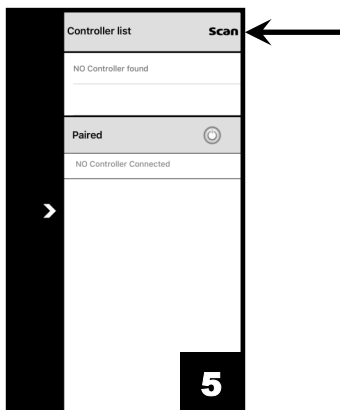
12. Open the ProGLOW™ app. When opening the app for the first time you will need to allow access to your phone. Select “OK” to allow access to your Media and Bluetooth. Shown in **Figures 1 and 2**.



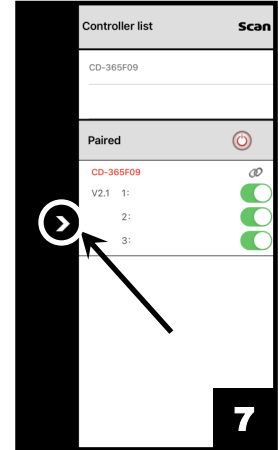
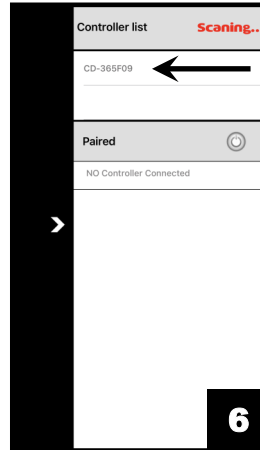
13. Next you will select “CHOOSE A DEVICE” as shown in **Figure 3**.
 14. Then select “Magical Wizard™” button as shown in **Figure 4**.



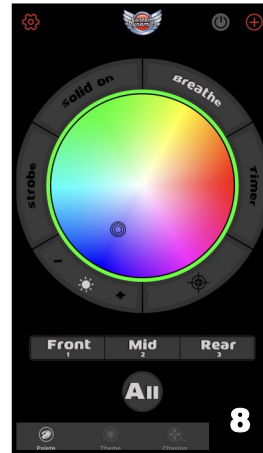
15. Pair the controller with the phone by tapping the “Scan” button in the upper right corner. Shown in **Figure 5**.



16. When the App has found the controller, the controller will appear in the Controller List. Shown in **Figure 6**.
 17. Tap the controller listed in the Controller List and the controller will pair with the phone. Once paired with the controller, tap the arrow on left side of the screen. Shown in **Figure 7**.



18. You should now be on the main control screen and ready to use your ProGLOW™ Bluetooth controller with Magical Wizards™ Accent Lights as shown in **Figure 8**.



Note: To pair the controller to a new phone, disconnect the Blue battery monitor wire from the battery. Touch the Blue battery monitor wire On/Off to the positive battery terminal 5 times. When the LED accessories start flashing and color cycling, the controller is ready to be paired to a new phone.

Note: For more information on App functions and features please visit <https://www.customdynamics.com/proglow-color-change-light-controller> or scan the code.



Installation Instructions - Page 3

Typical Layout Diagram

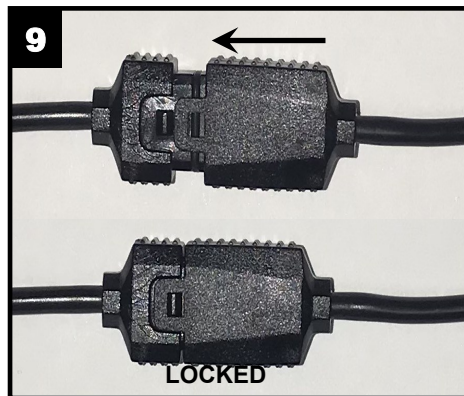


Note:

1. Install End Caps on all of open connectors to prevent damage to the lights or controller. Shown in diagram.



2. The Magical Wizards™ Adapter Harness that included with the ProGLOW™ Controller will not be used for this application. The LED Rock Light Wire Extensions will connect directly to the ProGLOW™ Controller .
3. Use caution when connecting the mating wiring connectors, confirm the mating connector is connected correctly or damage will occur to the lighting accessories. The locking tab should slide onto the lock and lock into position. Shown in Figure 9.



4. Optional Magnetic insert for mounting (Sold Separately). Shown in Figure 10.

