



Custom Dynamics® Windshield Trim LED Turn Signals Installation Instructions

We thank you for purchasing the Custom Dynamics® Windshield Trim LED turn signals. Our products utilize the latest technology and high quality components to ensure you the most reliable service. We offer one of the best warranty programs in the industry and we back our products with excellent customer support, if you have questions before or during installation of this product please call Custom Dynamics® at 1(800) 382-1388.

Part Number:

CD-WT2-01-B, CD-WT2-01-C
CD-WT2-SEQ-01-B, CD-WT2-SEQ-01-C

Package Contents:

- Windshield Trim Assembly (1)
- 1/4-20 x 7/8 Allen head Bolts (3)
- Washer (3)
- Y Adapter Harness (2)
- 4" Black Tie Wraps (6)

Fits: 2006-2013 Electra Glide® Standard/Classic/Ultra (FLHT, FLHTC, FLHTCU), Ultra Limited (FLHTK), Street Glide® (FLHX), Tri Glide® Ultra (FLHTCUTG), CVO™ Limited (FLHTKSE), CVO™ Street Glide® (FLHXSE) and CVO™ Electra Glide® Ultra Classic® (FLHTCUSE)



ATTENTION



Please read all Information below before Installation

Safety First: Make sure the bike is parked on a level surface and bike 's mechanical components are cool to the touch. To prevent electrical shock, disconnect the negative battery terminal from the battery before beginning installation.

Note: You will have to remove the front fairing in order to complete this installation. Please refer to your manufacturer service manual if unsure of this procedure.

Notice: This product is designed and intended for use as auxiliary lighting on motorcycles only. This product is NOT intended to replace any original equipment lighting installed on the motorcycle and should not be used for that purpose. This product must be wired such that it does not interfere with any original equipment lighting.

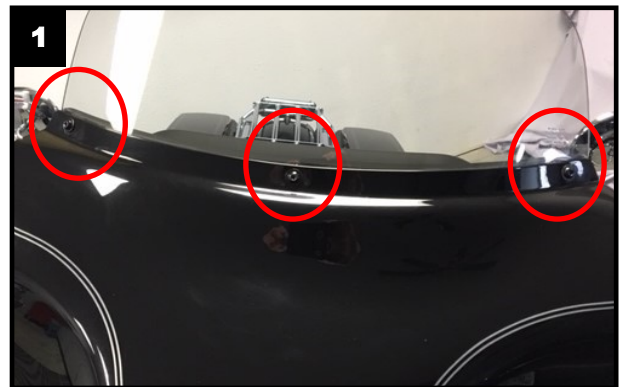
Notice: Failure to use the provided mounting hardware will void all warranties.

Cleaning: Take special care in cleaning the Bracket finish. Never use abrasive polishes or cleaners as these can scratch the finish.



Installation:

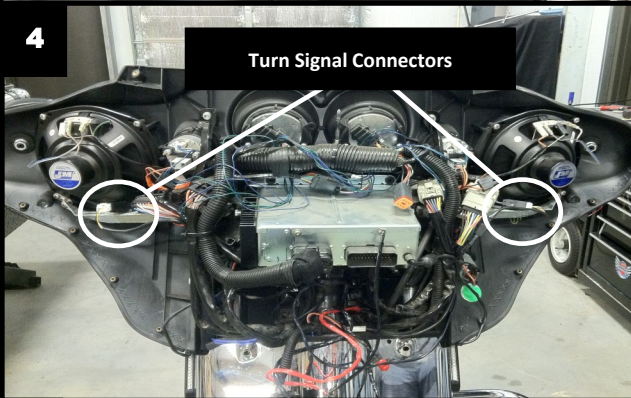
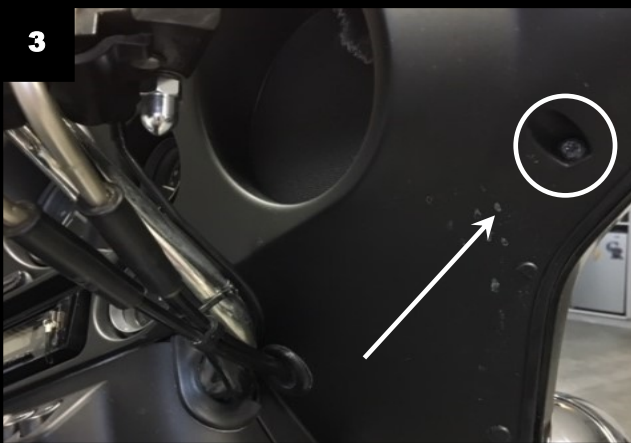
1. Cover the front fender to prevent damage to the fender during installation.
2. Remove the top 3 T27 Torx Bolts from the outer fairing as shown in **Picture 1**. Remove the windshield and store it in a safe place for reinstallation later.



3. Reinstall the center T27 Torx Bolt only that was removed in Step 2. Lightly tighten the center bolt to secure the fairing while you remove the remaining 4 inner fairing bolts.
4. Remove the 4 inner fairing bolts. The lower 2 inner fairing bolts are located on the lower triple tree as shown in **Picture 2**. Refer to **Picture 3** for the upper 2 inner fairing bolts.

Questions? Call us at: 1 (800) 382-1388 M-TH 8:30AM-5:30PM / FR 9:30AM-5:30PM EST

Installation Instructions - Page 2



5. While standing in front of the bike and holding the fairing, remove the center outer fairing T27 Torx bolt and pull the fairing slightly away from the bike.
6. With the fairing slightly pulled away from the bike, disconnect the connector from the headlamp. Lay the fairing on a protected flat surface to prevent damage.
7. Locate the front turn signal connectors. Refer to **Picture 4**.
8. Disconnect the OEM turn signal connectors and plug the Y Adapter Harnesses into front turn signal connectors in the fairing.
9. Connect the male 3pin JAE connectors of the windshield trim harnesses to the 3pin female connector of the Y Adapter Harnesses.
10. Turn the ignition to the "RUN" position and confirm that the windshield trim is operating correctly.
11. Re-install the fairing, make sure to plug in the headlamp connector back onto the headlamp. Hold the windshield trim above the fairing, then push the outer fairing cover into place.
12. Next put the windshield trim into position and secure loosely with the provided washer and new center 1/4-20 x 7/8" bolt. Make sure the wires route at the sides of the fairing as shown in **Picture 5**. Re-install the windshield, let it rest there for now.
13. Re-install the 4 T27 Torx bolts into the inner fairing. DO NOT tighten down yet, we want to be able to adjust fitment of the wires and windshield trim.
14. Adjust the slack in the wiring, make sure the wire is exiting the side area of the fairing. Using the provided remaining washers and the two 1/4-20 x 7/8" Allen head Bolts, install onto the fairing. Make sure there is no wire slack remaining on the side of the windshield trim. Once the screws are started, make any final adjustments to fitment, then tighten all 3 top bolts.
15. Tighten the 4 inner fairing bolts.
16. Test operation of all lighting in all modes before riding.