



## Custom Dynamics® Magic Strobes™ Brake Flasher Installation Instructions

We thank you for purchasing the Custom Dynamics® Magic Strobes™ Brake Light Flasher. Our products utilize the latest technology and high quality components to ensure you the most reliable service. We offer one of the best warranty programs in the industry and we back our products with excellent customer support, if you have questions before or during installation of this product please call Custom Dynamics® at 1(800) 382-1388.

**Part Number:** MAGIC-STROBES-INDTP

### Package Contents:

- Magic Strobes™ Brake Flasher (1)
- Cable Ties (5)
- Cable Tie Holder (1)
- Instructions

**Fitment:** 2015-2025 Indian® Roadmaster, Roadmaster Limited, Roadmaster Dark Horse & Roadmaster Elite, 2022-2025 Pursuit Limited & Pursuit Dark Horse, 108 models only. **Does not fit 2025 PowerPlus 112 models.**



## ATTENTION

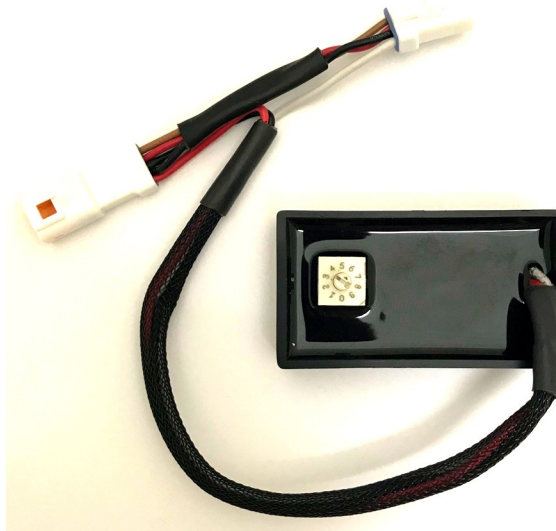


Please read all Information below before Installation

**Important:** When changing settings on Magic Strobes™ module, motorcycle power should be OFF.

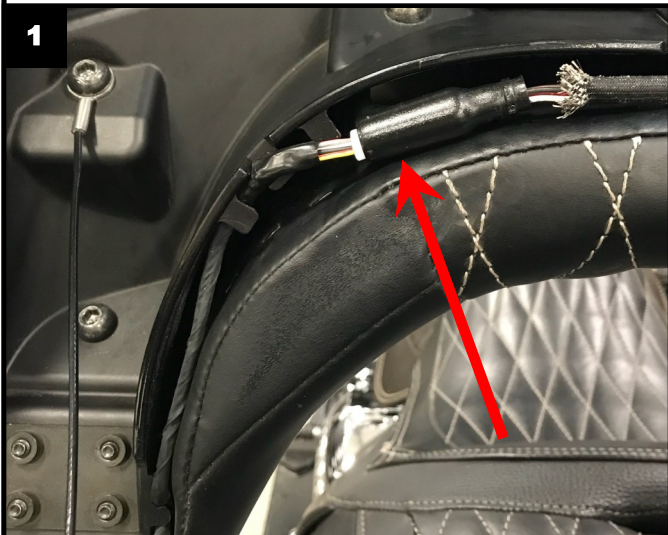
**Caution:** A stuck brake switch may cause this unit to overheat and fail. Unplug module immediately if this condition occurs.

**Note:** Although this device has been designed to significantly increase your braking visibility, flash/strobe patterns may not be street legal in your area. This Device is not DOT approved.



### Installation:

1. Remove all necessary parts to disconnect negative battery cable from the battery.
2. With the trunk lid open, locate the Trunk rear lighting harness connector behind the passenger backrest on the left side of the Trunk lid. Shown in **Figure 1**.
3. Connect the Magic Strobes™ module, in-line, into the Trunk rear lighting harness. Shown in **Figure 2 on Page 2**.
4. Reconnect the negative battery cable to the battery.
5. Select desired pattern on the dial with power Off. Shown on **Page 2 in Flash Pattern Information**.
6. To change the brake pattern, turn the motorcycle off and turn dial to desired pattern.
7. Locate a secure place for the Magic Strobes™ unit that will not interfere with the closure of the Trunk lid. Secure with the supplied Cable Ties so unit will not move and wiring from being cut, frayed or pinched. Shown in **Figure 3 on Page 2**.
8. Reinstall all necessary parts.
9. Test the Custom Dynamics® Magic Strobes™ Brake Flasher for proper operation.



Questions? Email: [Info@CustomDynamics.com](mailto:Info@CustomDynamics.com) or Call us at: 1 (800) 382-1388 M-TH 8:30AM-5:30PM / FR 9:30AM-5:30PM EST

# Installation Instructions - Page 2



## Flash Pattern Information:

