



Magic™ Tour Pak® Converter Installation Instructions

We thank you for purchasing the Custom Dynamics® Magic™ Tou Pak® Converter! Our products utilize the latest technology and high quality components to ensure you the most reliable service. We offer one of the best warranty programs in the industry and we back our products with excellent customer support, if you have questions before or during installation of this product please call Custom Dynamics® at 1(800) 382-1388.

Part Number: MAGIC-TPC

Package Contents:

- Converter Harness (1)
- Main Harness Adapter (1)
- Tie Wraps (8)
- Heat Shrink Tubing (4)

Fits: 2002-2013 Electra Glide® Ultra Classic/Limited models & 2011-2013 Road Glide® Ultra models equipped with OEM Ultra Tour-Pak® or King Style Tour-Pak® with 1157 incandescent bulbs.
Must be used in conjunction with a run/brake/turn controller or Custom Dynamics® Smart Triple Play® Unit.
Also fits 2008-2013 Tri Glide® models. Must be used in conjunction with a run/brake/turn controller or Custom Dynamics® Smart Triple Play® Unit.

Note: For proper operation of the Magic™ Tour Pak® Converter, low current draw LEDs MUST be used for the rear stock turn signals or the Tour Pack Rear 1157 Bulbs. Bikes equipped with Tour Pak Side marker incandescent bulbs must be upgraded to LEDs.

Important: A run-brake-turn converter must be installed prior to installing the Magic™ Tour Pak® Converter. Follow manufactures instructions for installing run-brake-turn converter if not previously installed. Bikes with Küryakyn Panacea™ Require Special RBT Controller, Please Contact Us For Details.

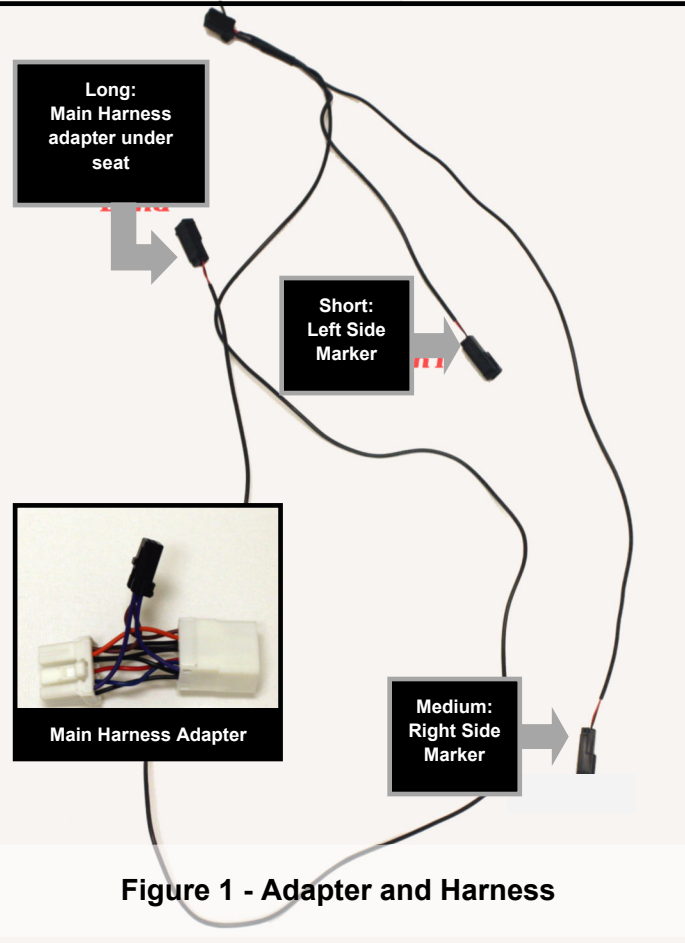
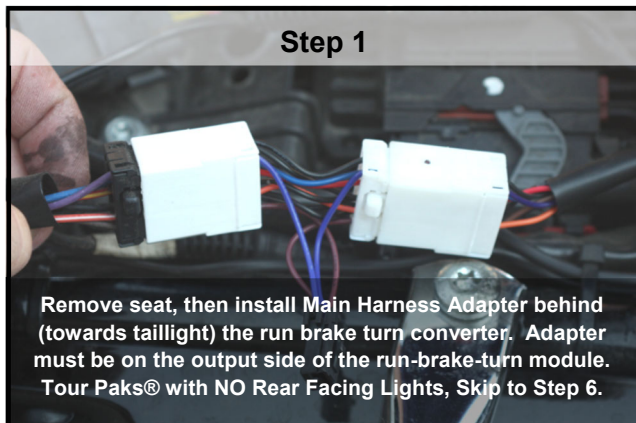


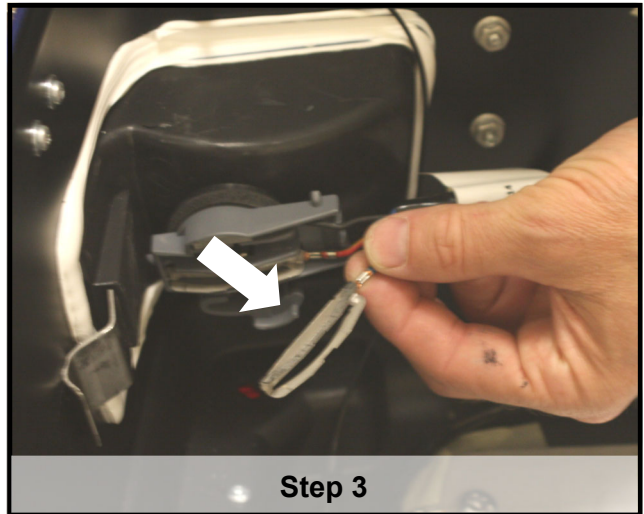
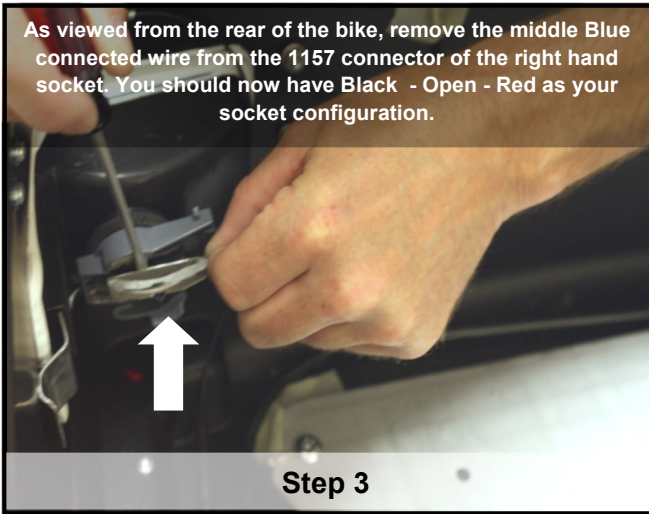
Figure 1 - Adapter and Harness



Questions? Call us at: 1 (800) 382-1388 M-TH 8:30AM-5:30PM / FR 9:30AM-5:30PM EST

Installation Instructions - Page 2

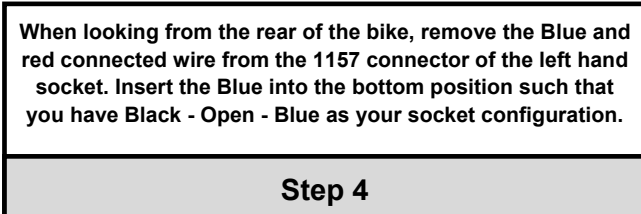
As viewed from the rear of the bike, remove the middle Blue connected wire from the 1157 connector of the right hand socket. You should now have Black - Open - Red as your socket configuration.



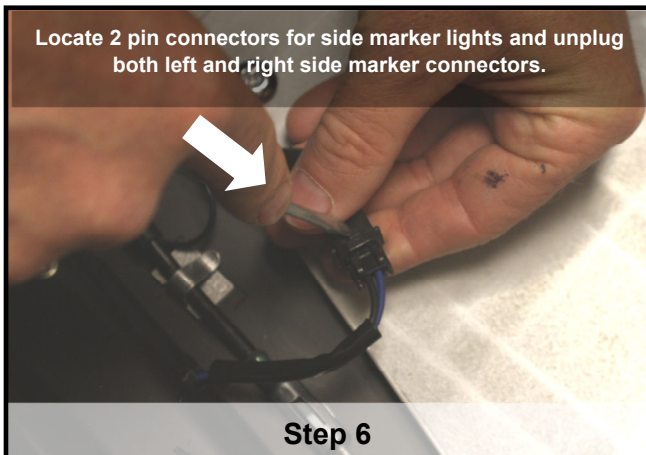
Cover right blue and left red un-used connectors with supplied heat shrink tubing so that no connector is exposed. Heat tubing with heat gun or hair dryer. Use supplied tie wraps to secure un-used connectors.



When looking from the rear of the bike, remove the Blue and red connected wire from the 1157 connector of the left hand socket. Insert the Blue into the bottom position such that you have Black - Open - Blue as your socket configuration.



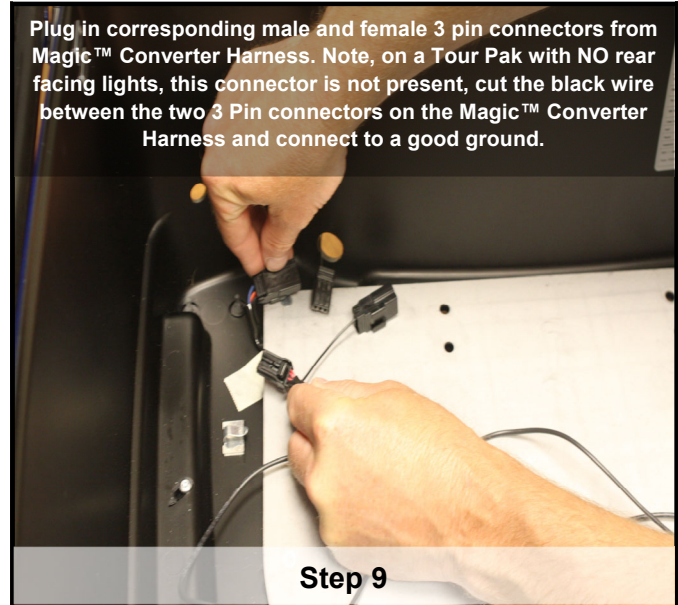
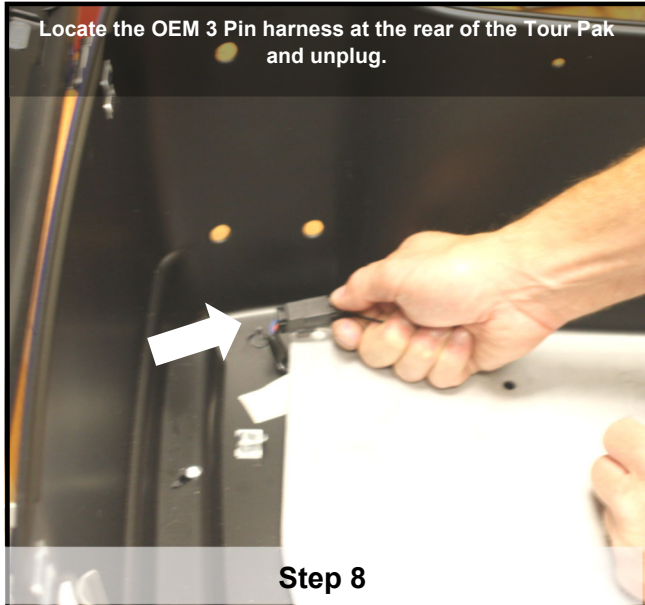
Locate 2 pin connectors for side marker lights and unplug both left and right side marker connectors.



Begin Installation of the Tour Pak harness, (refer to figure 1 on page 1). Plug the short 2 pin connector into the Left Tour Pak Side Light connector and the medium 2 pin connector into the Right Tour pak side light connector.



Installation Instructions - Page 3



Insert remaining long 2 pin connector through access hole in Tour Pack and route down to Main Harness Adapter under seat (from Step 1) and plug into Main Harness Adapter 2 pin connector.

Step 10

Clean up installation by using provided tie-wraps to secure all wires. Test operation of all lights on bike in all modes, running, brake and turn. Reinstall the liner in the tour pak and reinstall the seat.

Step 11

