



Custom Dynamics® ProGLOW™ Bluetooth Controller for Magical Wizards™ Accent Lights Installation Instructions

We thank you for purchasing the Custom Dynamics® ProGLOW™ Bluetooth Controller for Magical Wizards™ Accent Lights. Our products utilize the latest technology and high quality components to ensure you the most reliable service. We offer one of the best warranty programs in the industry and we back our products with excellent customer support, if you have questions before or during installation of this product please call Custom Dynamics® at 1(800) 382-1388.

Part Numbers: MW-BTBOX-1

Package Contents:

- ProGLOW™ Controller (1)
- Power Harness with Switch (1)
- ProGLOW™ End Cap (2)
- Magical Wizards™ Adapter Harness (3)
- 3M Tape (5)



Fits: Universal, 12VDC systems.

MW-BTBOX-1: ProGLOW™ 12v Bluetooth Controller works with Magical Wizards™ Color Changing LED Accent Light Accessories only.

Installation:

1. Connect the Red battery terminal of the Bluetooth Controller Power Harness and the Blue Battery Monitor wire from the controller to the Positive terminal of the battery. Connect the Black battery terminal of the Bluetooth Controller Power Harness to the Negative battery terminal.
2. Check the switch on the Power Harness to confirm it is not illuminated. If the switch on the Power Harness is illuminated, press the switch button so the switch is not illuminated.
3. Plug the power harness into the ProGLOW™ Bluetooth Controller power port.
4. (Optional Step) Connect the Black Brake Monitor wire on the Bluetooth Controller to the vehicle brake circuit for Brake Alert feature. Connection must be made before any type of brake light flasher module. If not used, cap wire to prevent shorting. (Lights will change to Solid Red when brake is engaged, then return to normal program function when released.)
5. Connect the provided Magical Wizards™ Adapter harness to one of the 3 Channel outputs of the controller. Install the provided End Caps on the 2 unused Channel outputs. Refer to the diagram on Page 3.
6. Connect your Magical Wizards™ LED accessories (Sold Separately) to the Magical Wizards™ Adapter Harness. Refer to the diagram on Page 3. **Note:** Multiple Magical Wizards™ LED accessories can be connected to one Magical Wizards™ Adapter Harness.
7. Mount the ON/OFF switch on the Power Harness in a discrete accessible location using the provided 3M tape. Clean the mounting area and switch with denatured alcohol and allow to dry before applying the 3M tape.
8. Use the provided 3M tape to secure the ProGLOW™ Bluetooth Controller in an area away from heat, water, and any moving parts. Clean the mounting area and controller with denatured alcohol and allow to dry before applying the 3m Tape.
9. Press the switch on the Power Harness, the LED Accessories should now be illuminated and color cycling.
10. Download the ProGLOW™ Bluetooth App from either the Google Play Store or the iPhone App Store depending on your smart phone device.



ATTENTION

Please read all Information below before Installation

Warning: Disconnect negative battery cable from battery; refer to owner's manual. Failure to do so may result in electrical shock, injury, or fire. Secure negative battery cable away from positive side of battery and all other positive voltage sources on vehicle.

Safety First: Always wear appropriate safety gear including safety glasses when performing any electrical work. It is highly recommended that safety glasses be worn throughout this installation process. Be sure vehicle is on level surface, secure and cool.

Important: Controller should only be used with Custom Dynamics® Magical Wizards™ LED accent lights. This device and the LEDs used with it are not compatible with other manufacture's products.

Important: This unit is rated for a 3 amp load. Never use a fuse greater than 3 amps in the in-line fuse holder, using a larger fuse or bypassing the fuse will void warranty.

Important: Maximum LEDs per channel is 150 in series connection, not to exceed 3 amps.

Note: Controller App is Compatible with iPhone 5 (IOS10.0) and newer equipped with Bluetooth 4.0 and with Android Phones Versions 4.2 and newer with Bluetooth 4.0. Apps available for download from the following sources:

- Google Play: <https://play.google.com/store/apps>
- iTunes: <https://itunes.apple.com/>

Keyword Search: ProGLOW™

Important: Controller should be secured after installation in an area away from heat, water, and any moving parts. We recommend the use of tie wraps (sold separately) to secure wires from becoming cut, frayed, or pinched. Custom Dynamics® is not liable for damage as a result of improperly securing or failing to secure the controller.

Important: Music Feature: Some iPhone models will require you to OWN the music for the app to access the music due to copyright laws. Some iPhone models will not allow access to music that is copyrighted.

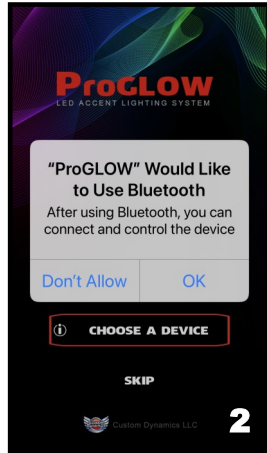
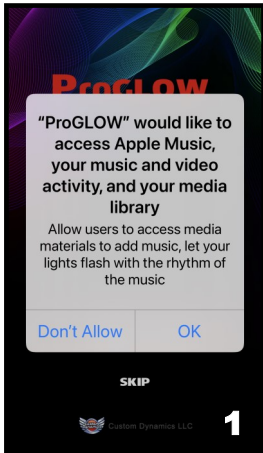


FCCID : 2A55N-MW-BTBOX-1

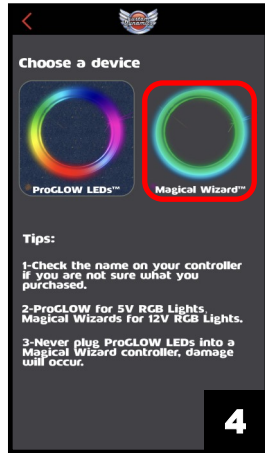
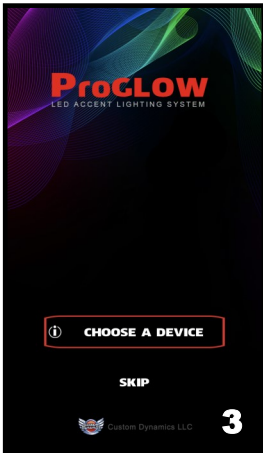
Questions? Call us at: 1 (800) 382-1388 M-TH 8:30AM-5:30PM / FR 9:30AM-5:30PM EST

Installation Instructions - Page 2.

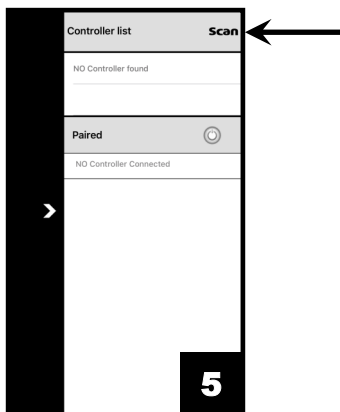
11. Open the ProGLOW™ app. When opening the app for the first time you will need to allow access to your phone. Select “OK” to allow access to your Media and Bluetooth. Refer to Photos 1 and 2.



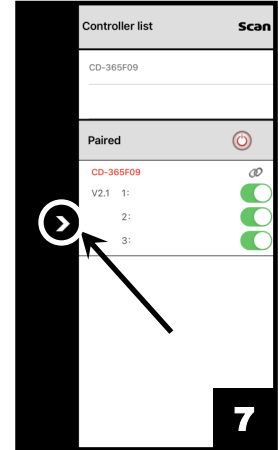
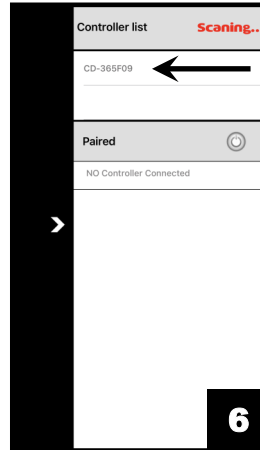
12. Next you will select “CHOOSE A DEVICE” as shown in Photo 3.
 13. Then select “Magical Wizard™” button as shown in Photo 4.



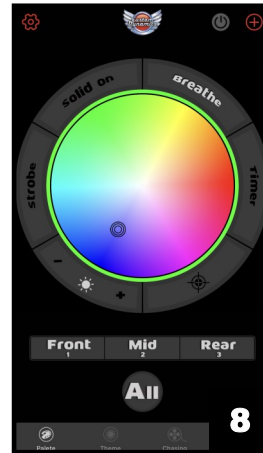
14. Pair the controller with the phone by tapping the “Scan” button in the upper right corner. Refer to Photo 5.



15. When the App has found the controller, the controller will appear in the Controller List. Refer to Photo 6.
 16. Tap the controller listed in the Controller List and the controller will pair with the phone. Once paired with the controller, tap the arrow on left side of the screen Refer to Photo 7.



17. You should now be on the main control screen and ready to use your ProGLOW™ Bluetooth controller with Magical Wizards™ Accent Lights as shown in Photo 8.

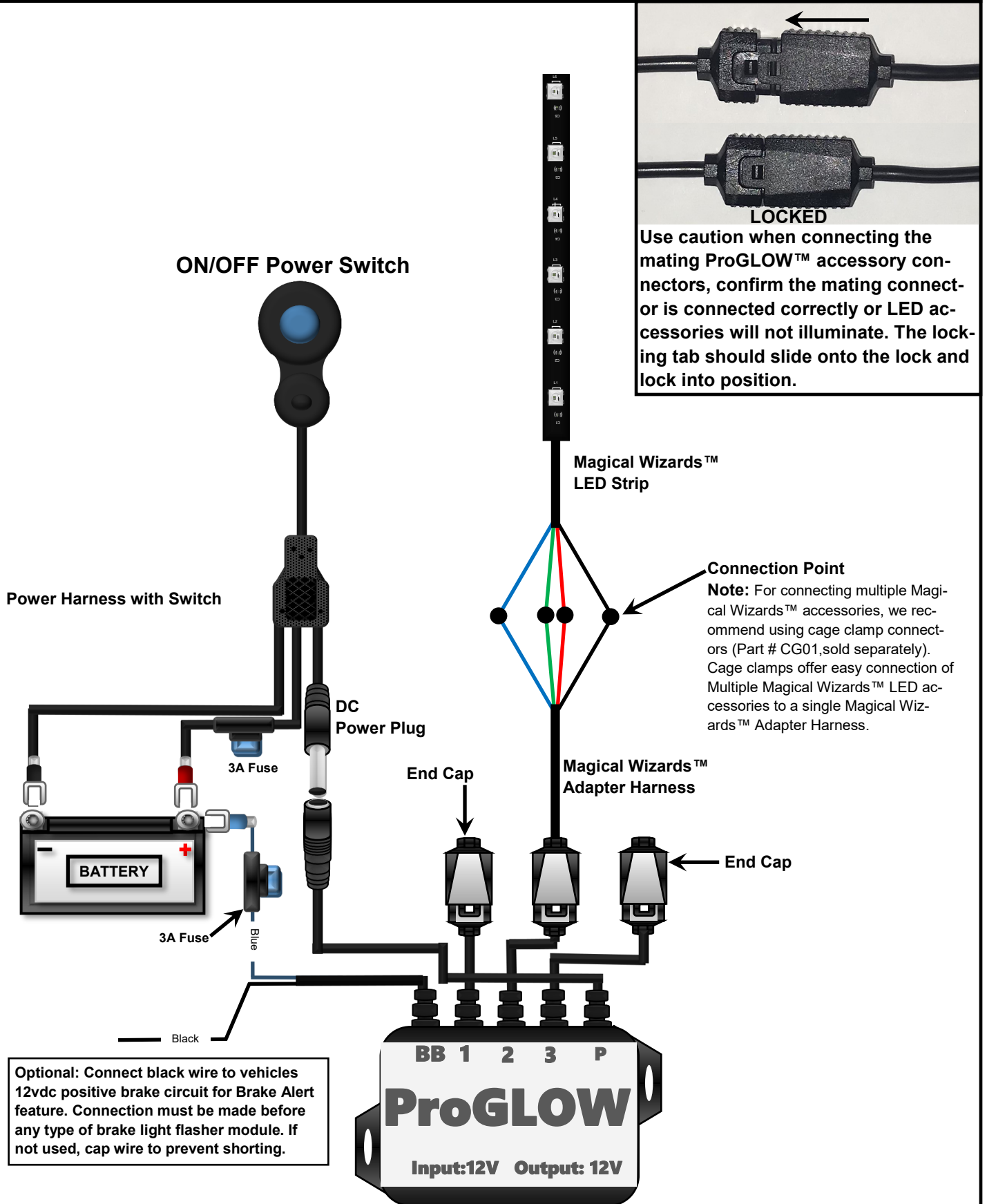


Note: To pair the controller to a new phone, disconnect the Blue battery monitor wire from the battery. Touch the Blue battery monitor wire On/Off to the positive battery terminal 5 times. When the LED accessories start flashing and color cycling, the controller is ready to be paired to a new phone.

Note: For more information on App functions and features please visit <https://www.customdynamics.com/proglow-color-change-light-controller> or scan the code.



Installation Instructions - Page 3.



Questions? Call us at: 1 (800) 382-1388 M-TH 8:30AM-5:30PM / FR 9:30AM-5:30PM EST