

PROBEAM®

BY CUSTOM DYNAMICS®

Custom Dynamics® ProBEAM® Headlight Trim Ring Installation Instructions

We thank you for purchasing the Custom Dynamics® ProBEAM® Headlight Trim Ring! Our LEDs offer maintenance free service and higher visibility. Our ProBEAM® product line utilizes the latest technology and automotive grade components to ensure the highest level of reliable service. Custom Dynamics® offers one of the best warranty programs and customer support in the industry. If you have any questions during the installation of this product please call us at 1(800) 382-1388.

Part Number: PB-7TR-AW-3B PB-7TR-AW-3C
PB-7TR-SEQ-3B PB-7TR-SEQ-3C

Package Contents:

- ProBEAM® LED Halo Headlight Trim Ring (1)
- Adapter Harness (1)
- 8-32 x 1" Mounting Screw (1)

Fitment: 1996-2005 Electra Glide (FLHT), Electra Glide Classic (FLHTC), Electra Glide Ultra Classic (FLHTCU), Ultra Classic CVO™ (FLHTCUSE), Ultra Limited (FLHTK).



ATTENTION

Please read all Information below before Installation

Safety First: Make sure the bike is parked on a level surface and bike's mechanical components are cool to the touch. To prevent electrical shock, disconnect the negative battery terminal from the battery before beginning installation.

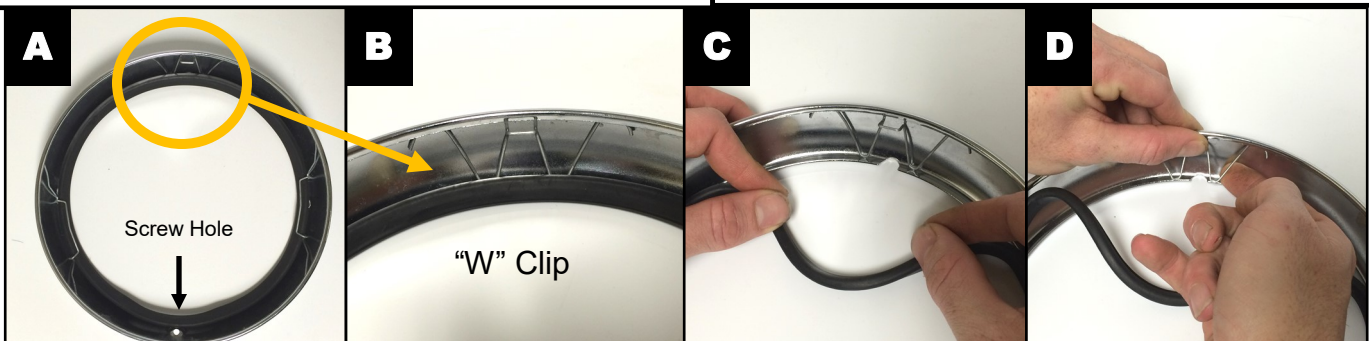
Note: You will have to remove the outer front fairing in order to complete this installation. Please refer to your manufacturer service manual if unsure of this procedure.

Care: Take special care in cleaning the Trim Ring, Never use abrasive polishes or cleaners as these may scratch the finish.

Notice: This product is designed and intended for use as auxiliary lighting on motorcycles only. This product is NOT intended to replace any original equipment lighting installed on the motorcycle and should not be used for that purpose. This product must be wired such that it does not interfere

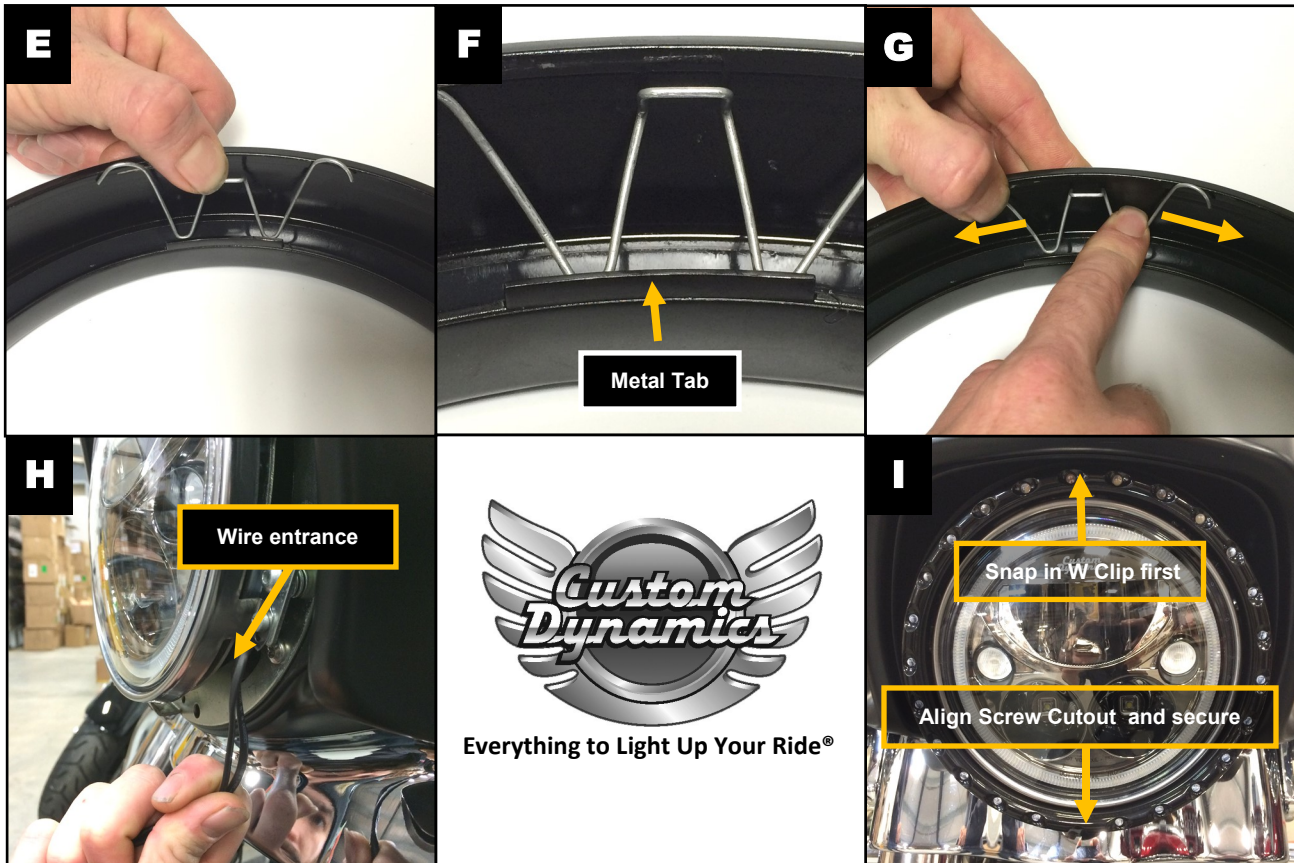
Installation: Trim Ring

1. Carefully remove all components from the packaging. Take care removing the harness as to not damage the wiring or pull any wires out of the connectors. Un-ravel the wire bundles on the trim ring. Keep in a safe place until ready to install.
2. Consult owners manual for replacing headlamp before beginning. Remove the stock headlamp trim ring from the mounting Assembly.
3. Turn over stock trim ring and locate the "W" clip on the inside (see figures A & B).
4. Remove the rubber gasket from the area around the clip (see figure C). Place a thumb over the center square part of the clip & an index finger behind the last leg of the W as shown in photo D. Pull with the right index finger and release the thumb, the clip will come free.



Questions? Call us at: 1 (800) 382-1388 M-TH 8:30AM-5:30PM / FR 9:30AM-5:30PM EST

Installation Instructions - Page 2



Installation: Trim Ring (continued)

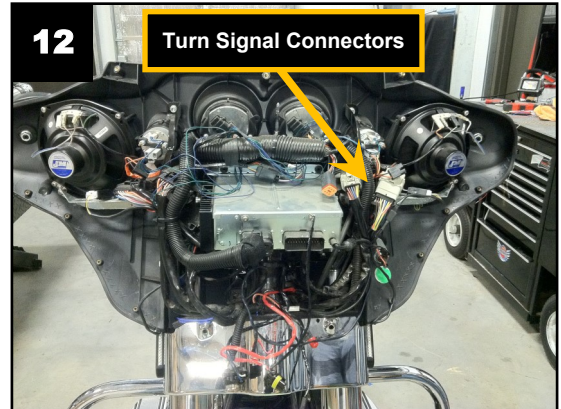
5. Prepare the new trim ring to accept the W Clip. Set on soft, clean surface to avoid harming the finish, face up with the screw hole pointing down to the bottom. Set the W Clip in behind the metal tab at the top (see figures E & F).
6. Hold the clip as shown in figure G and lightly push the end of the W clip arm outward until it snaps behind the lip of the trim ring. Do this for the other side as well. The trim Ring is now prepped for installation.
7. Refer to your models detailed service manual for instructions on removing the Outer front fairing. Once fairing is removed from the bike, set it on a soft clean surface to protect the finish.
8. Take both sets of trim ring wires and feed them through the small opening between the headlamp and the frame as shown in figure H.
9. Grab the wires from the inside of the fairing and pull until there is no slack left on the outside. The wiring is now ready to connect to the provided Adapter Harness.
10. Mount the trim ring to the headlight assembly. Orient the Screw cutout to the bottom as shown in figure I, then push on the Top of the Trim ring to snap the center arm of the W clip into place on the fairing.
11. Once the trim ring is in place and screw cut out is aligned, use the provided 8-32 X 1 screw to secure the trim ring to the fairing.

TECH TIP: If you experience issues with getting the mounting screw to thread into the screw hole, run a 8/32 thread Tap through the screw hole with the Trim Ring installed on the headlight assembly.

Questions? Call us at: 1 (800) 382-1388 M-TH 8:30AM-5:30PM / FR 9:30AM-5:30PM EST

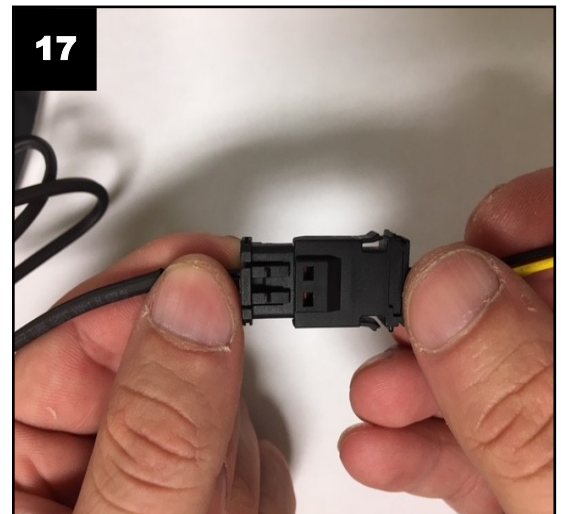
Installation: Adapter Harness

12. Having an extra set of hands is helpful for the next steps. The outer fairing will have to rest near the Inner fairing in order to make the wire connections. One person should hold the fairing in place, while the other performs the connections.
13. Look for the front turn signal harness connector on the inner fairing that attaches to each front turn signal. The connector is located in the area shown in Figure 12. You may need a service manual to locate, or trace turn signal wires to the connector.
14. Once the harness connectors are located on the bike, unplug the turn signal harness connectors and install the provided Adapter harness in line.



Installation: Trim Ring Wiring Connections

15. The trim ring has 2 connectors. One connector with a brown wire (right side). One connector with a purple wire (left side).
16. Connect the trim ring plug with the brown wire to the Adapter Harness connector with the Brown wire. Connect the trim ring plug with the purple wire to the Adapter Harness connector with the Purple wire.
17. Once the connections have been completed, it is time to dress the wires. Start with providing enough slack to the trim ring wiring.
18. Dress wires from the harnesses, secure with tie-wraps or other means if necessary. Make sure they will not get pinched when the fairing is secured.
19. Set the outer fairing back in place on the bike, but do not secure yet. Be sure to plug the Headlight connector in as well.
20. Make sure battery is connected, then turn the ignition key on and test the function of the Trim Ring. The Right and left sections are split 50/50. When in Running mode, the White LEDs around the ring should be illuminated. Test each turn signal, when the turn signal is on, the appropriate side's white LEDs will turn off.
21. Secure the Fairing to the bike.



Everything to Light Up Your