

## Custom Dynamics® ProBEAM® Bullet Bezel Lenses Installation Instructions



We thank you for purchasing the Custom Dynamics® ProBEAM® Bullet Bezel Lenses. Our LEDs offer maintenance free service and higher visibility. Our ProBEAM® product line utilizes the latest technology and automotive grade components to ensure the highest level of reliable service. Custom Dynamics® offers one of the best warranty programs and customer support in the industry. If you have any questions during the installation of this product please call us at 1(800) 382-1388.

**Part Number:** PB-B-BEZ-BR PB-B-BEZ-CR PB-B-BEZ-BS  
PB-B-BEZ-CS PB-B-BEZ-BA PB-B-BEZ-CA PB-B-BEZ-GS

### Package Contents:

- ProBEAM® Bullet Bezel Lenses (2)
- Instructions (1)

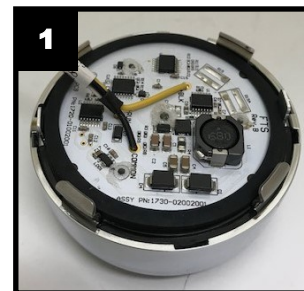
**Fitment:** 2000-2025 Harley-Davidson® motorcycles with OEM Bullet Deuce Style OEM turn signals.

**Note:** Can only replace the front lenses on V-Rod models and 2008-2012 XR1200.

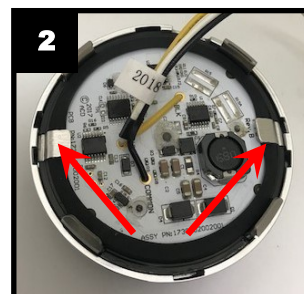


### Installation:

1. Remove the existing lens and turn signal bulb or LED from turn signal housing.
2. Remove any corrosion or dielectric grease from the socket to insure the socket contacts are clean.
3. Lay the ProBEAM® Bullet Bezel Lens face down on a flat scratch free surface and insert the ProBEAM® LED turn signal into the Bullet Bezel Lens as shown in **Figure 1**.



4. Gently bend the 2 Bullet Bezel Lens turn signal holding tabs down to secure the ProBEAM® LED turn signal in the Bullet Bezel Lens as shown in **Figure 2**.



# ATTENTION

Please read all information below before installation

**Note:** Use care in removing the OEM lens and bulbs from the housing, so as not to scratch or mar the chrome housing. Custom Dynamics® is not liable for damage to chrome housing during installation.

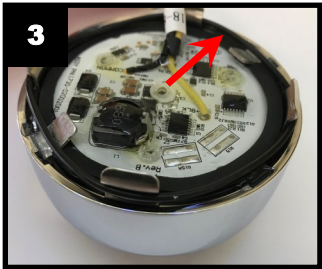
**Note:** ProBEAM® Amber/White Front Turn Signals are DOT and SAE compliant when used with ProBEAM® Smoke Lenses. ProBEAM® Red Rear Turn Signals are DOT and SAE compliant when used with ProBEAM® Smoke or Red Lenses.

Questions? Email: [info@CustomDynamics.com](mailto:info@CustomDynamics.com) or Call us at: 1 (800) 382-1388 M-TH 8:30AM-5:30PM / FR 9:30AM-5:30PM EST

## Installation Instructions - Page 2

### Installation Continued:

5. Confirm the proper orientation of the socket base and insert the ProBEAM® LED Turn Signal base into the socket. If it seems hard to twist the base into the socket or hard to remove, it is orientated the wrong way.
6. Twist the Bullet Bezel Lens a few rotations to coil wire from the ProBEAM® LED Turn Signal to the socket base.
7. Ensure the o-ring is installed on the back of the Bullet Bezel as shown in **Figure 3**.



8. Install the Bullet Bezel on the turn signal housing. The Bezel must be fully seated against the turn signal housing when installed; there should be no gaps between the Bezel and the turn signal housing.
9. Test the ProBEAM® LED Turn Signal for proper operation.