

Custom Dynamics® ProBEAM® Fillerz® LED Inserts Installation Instructions

PROBEAM®

BY CUSTOM DYNAMICS®

Part Numbers

Patent

PB-FILL-23-RB, PB-FILL-23-SB, PB-FILL-23-RC, PB-FILL-23-SC US Patent:D814673, D824553, D846166 China Patent:ZL201730501975.7

Package Contents

ProBEAM® Fillerz® LED Inserts (2)
ProBEAM® Eclipse® Modules (2)
4" Cable Ties (10)
Instructions (1)



Fitment

2023-2025 Harley-Davidson® CVO Street Glide (FLHXSE), CVO Road Glide (FLTRXSE), 2025 Street Glide Ultra (FLHXU), 2024-2025 Street Glide (FLHX), Road Glide (FLTRX) and CVO Road Glide ST (FLTRXSTSE).

Suggested Tools

Safety Glasses
Side Cutters
Denatured Alcohol (Optional)
Adhesive Promoter (Optional)

Installation

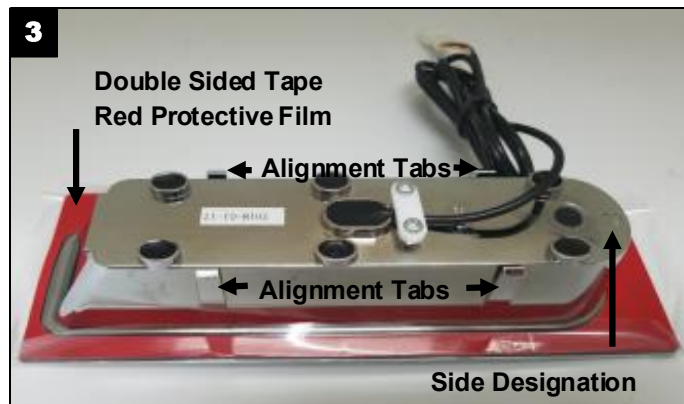
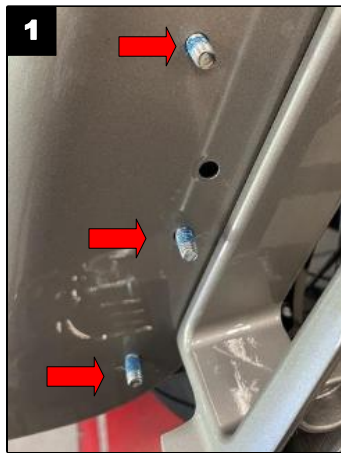
Warning

Rider and passenger safety depend upon the correct installation of this kit. Use the appropriate service manual procedures. If the procedure is not within your capabilities or you do not have the correct tools, have a qualified technician perform the installation. Improper installation of this kit could result in death or serious injury.

1. Remove all necessary parts to disconnect the negative battery cable from the battery.
2. Remove the saddlebags to allow access to the saddlebag support brackets on rear fender.
3. Remove the left and right OEM taillights by removing the three flange nuts from the studs. Shown in **Figure 1**.
4. Disconnect the OEM taillights from the JAE connectors.
5. Remove the stud plate from the fender that is held in place by double sided tape.
6. Clean the surface area of the fender strut support brackets with denatured alcohol and allow to dry.
7. Verify the Left and the Right ProBEAM® Fillerz® LED Inserts before installing, they are stamped with an L and R at the top of the back side. Shown in **Figure 2**.
8. Remove the red protective film on the double sided tape from the back of the ProBEAM® Fillerz® LED Insert. Line up the bottom edge of the ProBEAM® Fillerz® LED Insert with the bottom of the saddlebag support bracket. Push the ProBEAM® Fillerz® LED Insert into place until the alignment tabs click. Apply pressure evenly over the ProBEAM® Fillerz® LED Insert to ensure the tape is applied evenly. Shown in **Figure 2**.
9. Connect the ProBEAM® Eclipse® Modules in-line from the ProBEAM® Fillerz® LED Insert to the JAE rear taillight connector on the motorcycle. Shown in **Figure 3**.
10. Secure the ProBEAM® Fillerz® LED Insert wires with the supplied Cable Ties along fender strut support bracket from being cut, frayed or pinched.

Questions? Email: Info@CustomDynamics.com or Call us at: 1(919)554-0949 M-TH 8:30AM-5:30PM, F 9:30AM-5:30PM EST

Installation Instructions Continued - 2



11. Reconnect the negative battery cable to the battery and reinstall all necessary parts.
12. Test the new Custom Dynamics® ProBEAM® Fillerz® LED Inserts for proper operation.

Note

If dash indicators are rapid flashing perform a BCM Sync by turning the ignition ON. Turn the 4 way hazards on and count 10 flashes and deactivate. Do this three times and turn ignition Off then back ON to check the dash indicators operation to make sure they are no longer rapid flashing.