

## Custom Dynamics® ProBEAM® LED Halo Fog Lamp Yellow Lens Installation Instructions



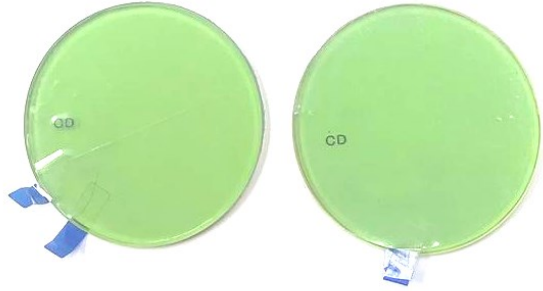
We thank you for purchasing the Custom Dynamics® ProBEAM® LED Halo Fog Lamp Yellow Lens. Our products utilize the latest technology and high quality components to ensure you the most reliable service. We offer one of the best warranty programs in the industry and we back our products with excellent customer support, if you have questions before or during installation of this product please call Custom Dynamics® at 1 (800) 382-1388.

**Part Numbers:** PB-FOG-LENS-Y

### Package Contents:

- ProBEAM® LED Halo Fog Lamp Yellow Lens (2)
- Instructions (1)

**Fitment:** Custom Dynamics® ProBEAM® LED Halo Fog Lamps (sold separately).



# ATTENTION

Please read all information below before installation

**Warning:** Remove seat and disconnect the negative battery from the battery; Failure to do so may result in electrical shock, injury or fire. Secure negative battery cable away from positive side of battery and all other positive voltage sources on motorcycle.

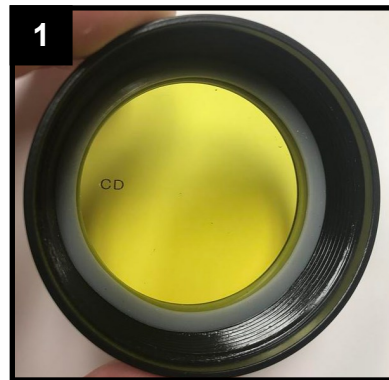
**Safety First:** Make sure the motorcycle is parked on a level surface and motorcycles mechanical components are cool to the touch.

**Note:** Always wear appropriate safety gear including safety glasses when soldering or performing any electrical work. It is highly recommended that safety glasses be worn throughout this installation process. Please read all instructions before starting project.

**Important:** This product is designed and intended for use as auxiliary lighting only. It is **NOT** intended to replace any OEM lighting installed on the motorcycle and should **NOT** be used for that purpose.

### Installation:

1. Remove lens bezel from the ProBEAM® LED Halo Fog Lamps by turning the bezel counterclockwise.
2. Remove the clear lens with the gasket from the lens bezel.
3. Wearing gloves, to prevent fingerprints on the new ProBEAM® Yellow Lens, remove the protective film from the ProBEAM® Yellow Lens.
4. Place the existing lens gasket on the new ProBEAM® Yellow Lens and set into the lens bezel. Shown in **Figure 1**.



5. Reinstall the lens bezel onto the ProBEAM® Halo Fog Lamp housing.
6. Test the Custom Dynamics® ProBEAM® Halo Fog Lamp Yellow Lens for proper operation.

Questions? Email: [info@CustomDynamics.com](mailto:info@CustomDynamics.com) or Call us at: 1 (800) 382-1388 M-TH 8:30AM-5:30PM / FR 9:30AM-5:30PM EST