

Custom Dynamics® ProBEAM® Sequential Saddlebag LED Lights Installation Instructions



We thank you for purchasing the Custom Dynamics® ProBEAM® Sequential Saddlebag LED Lights. Our products utilize the latest technology and high quality components to ensure you the most reliable service. We offer one of the best warranty programs in the industry and we back our products with excellent customer support, if you have questions before or during installation of this product please call Custom Dynamics® at 1(800) 382-1388.

Part Numbers: PB-SBSEQ-BCM-BR PB-SBSEQ-BCM-BS
PB-SBSEQ-BCM-CR PB-SBSEQ-BCM-CS
US Patent: D875977, D876,691S
China Patent: ZL201 930037082.0

Package Contents:

- ProBEAM® Saddlebag LED Lights w/ Quick Disconnect Harness (2)
- BCM Y Harness Adapter w/ Plugs (1)
- 4" Cable Ties (10)
- Cable Tie Holders (6)
- Instructions (1)

Fits: 2014-2024 Harley-Davidson® Ultra Limited (FLHTK), 2014-2023 Street Glide (FLHX), Street Glide Special (FLHXS), 2015-2023 Road Glide (FLTRX), Road Glide Special (FLTRXS), 2017-2025 Road King Special (FLHRXS), 2014-2019 Ultra Classic (FLHTCU), Ultra Classic Lo (FLHTCUL), Ultra Limited Lo (FLHTKL), Road Glide Ultra (FLTRU), 2020-2024 Road Glide Limited (FLTRK), 2016 Road Glide Ultra CVO (FLTRUSE), 2022-2023 Road Glide Limited CVO (FLTRKSE) and 2016-2022 Limited CVO (FLHTKSE).



Please read all Information below before Installation

Disclaimer: Removal of our saddlebag lights after installation, may cause permanent damage to the finished surface area of the saddlebag.

Warning: Disconnect negative battery cable from battery; refer to owner's manual. Failure to do so may result in electrical shock, injury or fire. Secure negative battery cable away from positive side of battery and all other positive voltage sources on vehicle.

Safety First: Always wear appropriate safety gear including safety glasses when performing any electrical work. It is highly recommended that safety glasses be worn throughout this installation process. Be sure vehicle is on level surface, secure and cool.

Important: This product is designed and intended for use as auxiliary lighting only. It is NOT intended to replace any original equipment lighting installed on the vehicle and should not be used for that purpose. This product must be wired so that it does not interfere with any original equipment lighting.

Note: The Y Harness Adapter must be plugged into the input (in front) of any brake strobe modules.



Installation:

1. Remove seat and disconnect the negative battery cable from the battery.
2. Remove both left and right saddlebags.
3. Test fit the ProBEAM® Sequential Saddlebag LED Lights, on each bag. The light should mount a couple millimeters below the bottom edge of the lid when the lid is closed. Mark the location with a grease pencil.
4. Clean the surface area location with denatured alcohol. Allow 1-2 minutes to dry.
5. Remove the red adhesive backing and install the lights on the left and right saddlebags. Press firmly into place.
6. Clean the surface area locations for the supplied Cable Tie Holders with alcohol. Remove paper backing from Cable Tie Holders and press into place. Shown in **Figure 1**.



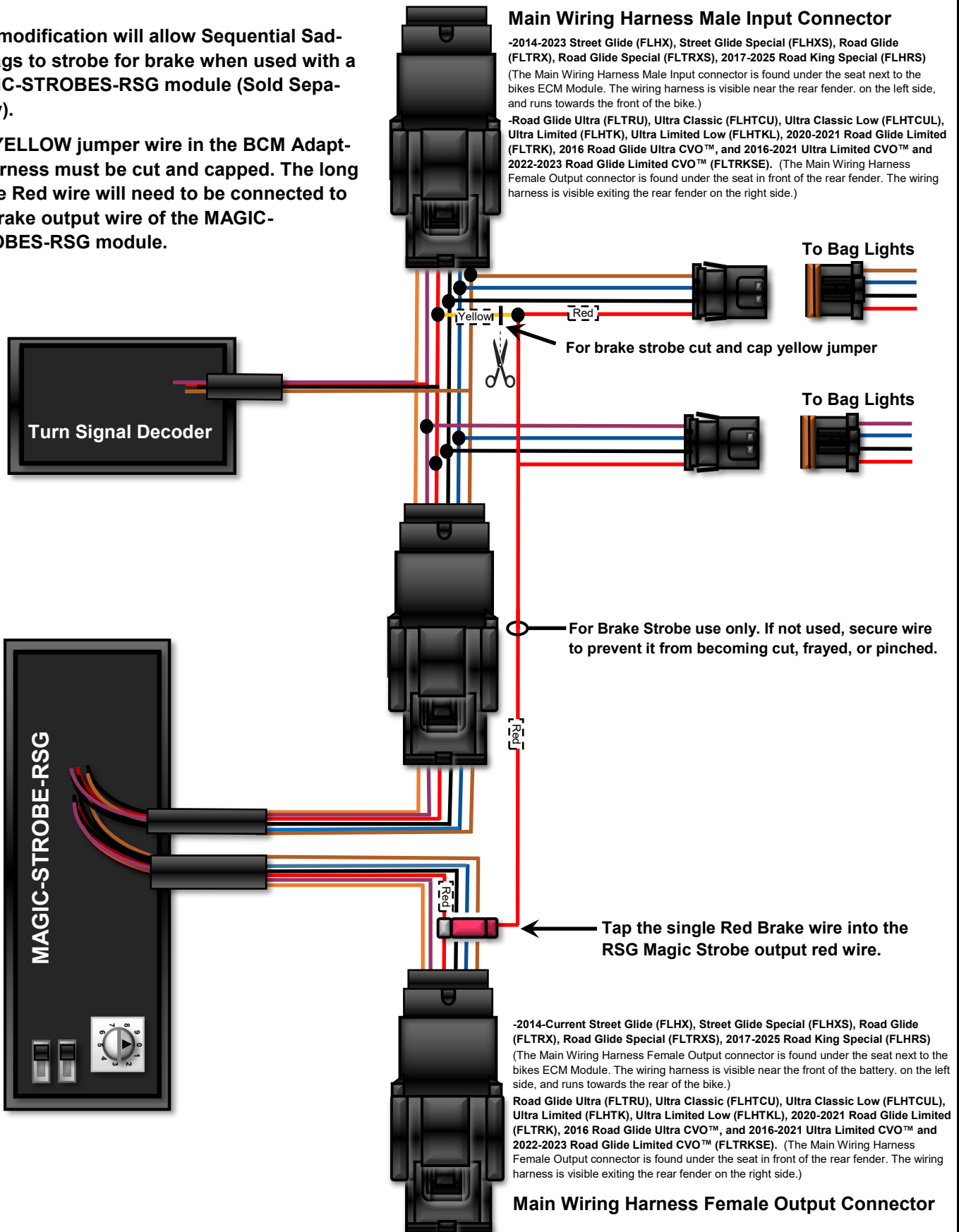
7. Route wires from ProBEAM® Sequential Saddlebag LED Lights to each Cable Tie Holder and secure with supplied Cable Ties.
8. Plug BCM Y Harness Adapter into rear wiring harness.
9. Reinstall saddlebags. Connect 3 pin plugs from ProBEAM® Sequential Saddlebag LED Lights to BCM Y Harness Adapter. Violet wire is left side and brown wire is right side. **Note: See Brake Strobe Modification on Page 2.**
10. Secure wires with the supplied Cable Ties from being cut, frayed or pinched.
11. Reconnect the negative battery cable to the battery and reinstall the seat.
12. Test the Custom Dynamics® ProBEAM® Sequential Saddlebag LED Lights for proper operation.

Questions? Email: info@CustomDynamics.com or Call us at: 1 (800) 382-1388 M-TH 8:30AM-5:30PM / FR 9:30AM-5:30PM EST

Sequential Saddlebag Brake Strobe Modification

This modification will allow Sequential Saddlebags to strobe for brake when used with a **MAGIC-STROBES-RSG** module (Sold Separately).

The **YELLOW** jumper wire in the BCM Adapter Harness must be cut and capped. The long single **Red** wire will need to be connected to the brake output wire of the **MAGIC-STROBES-RSG** module.



Questions? Email: info@CustomDynamics.com or Call us at: 1 (800) 382-1388 M-TH 8:30AM-5:30PM / FR 9:30AM-5:30PM EST