

PROBEAM®

BY CUSTOM DYNAMICS®

Custom Dynamics® ProBEAM® LED Tour-Pak Arms Installation Instructions

We thank you for purchasing the Custom Dynamics® ProBEAM® LED Tour-Pak Arms! Our LEDs offer maintenance free service and higher visibility. Our ProBEAM® product line utilizes the latest technology and automotive grade components to ensure the highest level of reliable service. Custom Dynamics® offers one of the best warranty programs and customer support in the industry. If you have any questions during the installation of this product please call us at 1(800) 382-1388.

Part Number: PB-TP-ARM-TPCR
PB-TP-ARM-TPCS

Package Contents:

- ProBEAM® Tour-Pak LED Arm (Pair)
- Wiring Harness (1)
- Wire Tie (8)
- Wire Tie Holder (6)
- Heat Shrink Tubing (4)



Fitment: 2006-2013 Harley-Davidson® Electra Glide® Ultra Classic/Limited Models & 2011-2013 Road Glide® Ultra Models with King & Ultra Tour-Paks® with SMART Triple Play® module installed.

Warning: Disconnect negative battery cable from battery; refer to owner's manual. Failure to do so may result in electrical shock, injury, or fire. Secure negative battery cable away from positive side of battery and all other positive voltage sources on vehicle.

Important: Motorcycle should be secured on a level surface for installation.

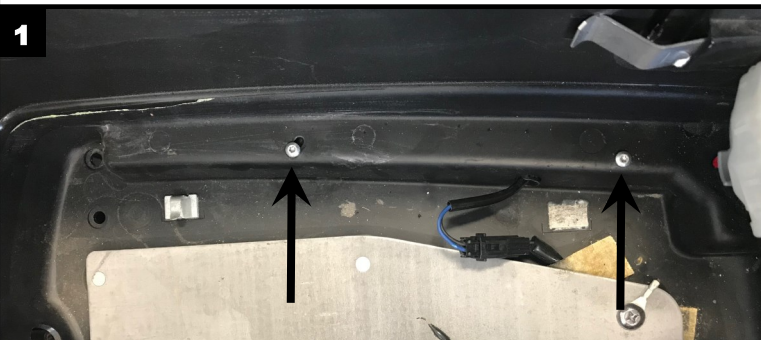
Note: For proper operation, low current draw LEDs MUST be used for the rear stock turn signals and the rear Tour-Pak® lights.

Important: A SMART Triple Play® moduler must be installed prior to installing the Tour Pak® LED Arms Wiring Harness. Follow SMART Triple Play® instructions if not previously installed. Bikes with Kuryakyn Panacea™ Require Special RBT Controller, Please Contact Us For Details.

Notice: Do NOT use thread locker such as Loc-Tite™ with this product. It will weaken the plastic at the screw holes causing cracks and will void the warranty.

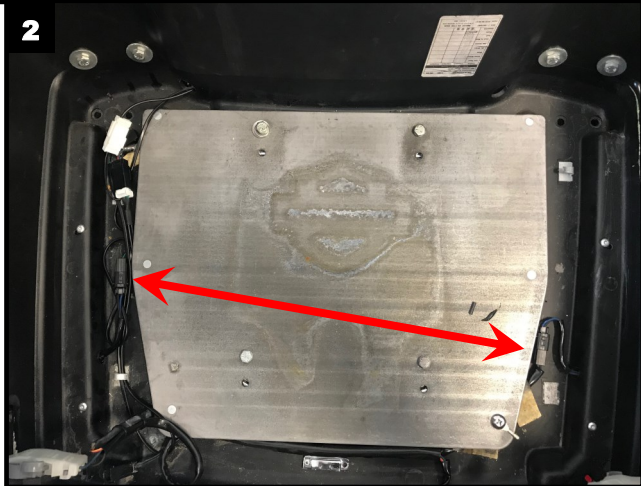
Installation:

1. Secure motorcycle on level surface. Remove seat and disconnect negative battery cable from the battery.
2. Remove all contents and liner from the Tour-Pak® .
3. Remove the 4 screws (2 per side) holding the existing Tour -Pak® marker lamps, refer to Photo 1.

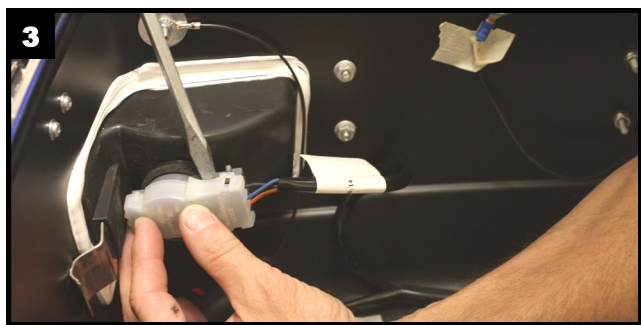


4. Disconnect the wiring connectors for the existing Tour-Pak® marker lamps and remove the marker lamps Refer to Photo 2. The stock wiring connectors will not be used for the new LED Tour-Pak® arms.
5. Feed the wire and connector of the new Tour-Pak® LED Arms through the wire hole in the Tour-Pak®. Place the Tour-Pak® LED Arms in position.
6. Using the 4 existing marker lamp screws, removed in Step 3, secure the new Tour-Pak® LED Arms to the Tour-Pak®.

Questions? Call us at: 1 (800) 382-1388 M-TH 8:30AM-5:30PM / FR 9:30AM-5:30PM EST



7. Remove the plastic covers on both rear taillights of the Tour-Pak®.



8. At the Right rear Tour-Pak® taillight (as sitting on the bike) remove the Blue wire terminal (middle) from the socket. The socket should be configured BLACK-OPEN-RED.

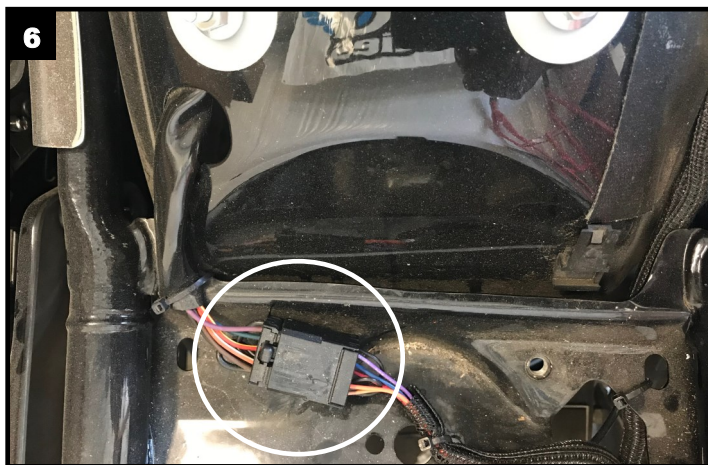


9. At the Left rear Tour-Pak® taillight (as sitting on the bike) remove the Blue and Red wire terminals from the socket. Insert the Blue wire terminal into the bottom position where the Red wire terminal was removed. The socket should be configured BLACK-OPEN-BLUE.
10. Using the provided heat shrink, cover the unused Right rear Blue wire terminal and Left rear Red wire terminal so no part of the terminal is exposed. Use tie wraps to secure the terminals to the wiring harness.



Installation Continued:

11. Locate the wire connector going to the rear fender lighting harness under the seat. Refer to Photo 6. Plug the provided Tour-Pak® Wiring Harness in-line with the rear fender lighting harness connector.



12. Route the marker lamp connectors of the Tour-Pak® Wiring Harness into the Tour-Pak® and connect to the new Tour-Pak® LED Arms. NOTE: The short marker lamp connector goes to the left side and the long marker lamp connector goes to the right side.

13. Locate and disconnect the Tour-Pak® lighting harness 3 pin connector in the front left corner as shown in Photo 7. Plug the male and female 3 pin connectors of the Tour-Pak® Wiring Harness inline in the Tour-Pak® lighting harness.



14. Make sure that any part of the wiring harness will not be pinched or damaged once the Tour-Pak® liner or seat are installed.
15. Reinstall the Tour-Pak® liner and contents.
16. Reconnect the negative battery cable to the battery and re-install the seat.
17. Check operation of all lighting before riding in run, brake, turn and brake/turn modes.