

Custom Dynamics® Road Glide ProGLOW™ LED Headlight Installation Instructions



We thank you for purchasing the Custom Dynamics® Road Glide ProGLOW™ LED Headlight. Our products utilize the latest technology and high quality components to ensure you the most reliable service. We offer one of the best warranty programs in the industry and we back our products with excellent customer support, if you have questions before or during installation of this product please call Custom Dynamics® at 1(800) 382-1388.

Part Number: PG-RG-B PG-RG-C

Package Contents:

- Road Glide ProGLOW™ LED Headlight (1)
- PG-Y-59 Harness (1)
- Instructions (1)

Fits: 2015-2023 Harley-Davidson® Road Glide (FLTRX), Road Glide Special (FLTRXS), 2022-2023 Road Glide ST (FLTRXST) & CVO™ Road Glide Limited (FLTRKSE), 2020-2024 Road Glide Limited (FLTRK), 2018-2022 CVO™ Road Glide (FLTRXSE), 2016-2019 Road Glide Ultra (FLTRU), 2020-2022 CVO™ Road Glide Ultra (FLTRUSE) and 2023-2025 Road Glide 3 (FLTRT).

Note: Requires ProGLOW™ Bluetooth Controller PG-BTBOX-1 (sold separately) and ProGLOW™ App download for control of color changing double x pattern.



ATTENTION

Please read all Information below before Installation

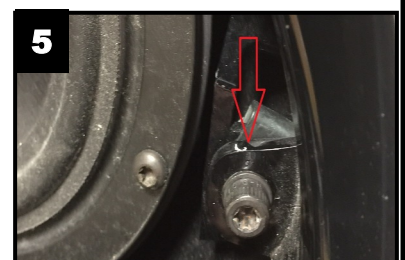
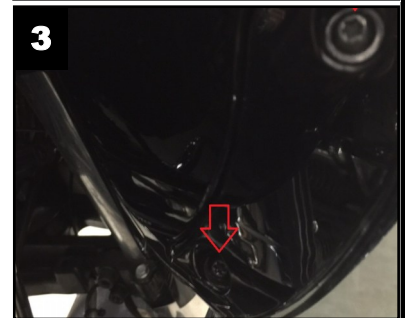
Important: Due to the increased light output from this unit, it is recommended you take the motorcycle to a dealer to have the headlamp properly adjusted. Weight and tire pressure can affect the position of the light.

Warning: To prevent possible electrical shock, disconnect the negative battery terminal before installing this product.

Important: Make all wiring connections with the power OFF to prevent damage to the ProGLOW™ Headlight and/or the ProGLOW™ Bluetooth Controller.

Installation:

1. Remove the 4 stock windshield bolts and remove the windshield. Shown in **Figure 1**.
2. Remove factory vent by pulling straight up on the vent. The vent comes snapped in place.
3. Locate and unplug the left and right side 3 pin turn signal harness. Shown in **Figure 2**.
4. Locate and remove the lower T-25 screw below each glove box on the inner fairing that fasten the wind deflectors and the outer fairing to the inner fairing. Shown in **Figure 3**.
5. Remove both left and right speaker grilles on the inner fairing by pushing upward with your hand from the inside of the fairing.
6. Remove the 3/16" socket Allen head bolts from the outside of each turn signal housing. Shown in **Figure 4**.
7. Once the speaker grilles are removed, locate and remove the T-27 torx bolts in each corner of the speaker housing. Once the bolts are removed the outer fairing will be separated from the inner fairing. Shown in **Figure 5**.
8. Remove the outer fairing (with OEM turn signal housings still attached) and set to the side.

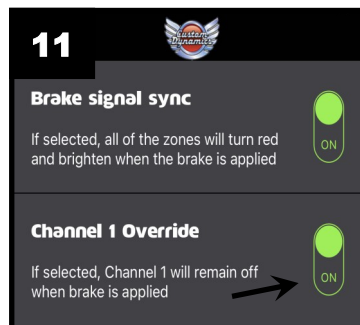
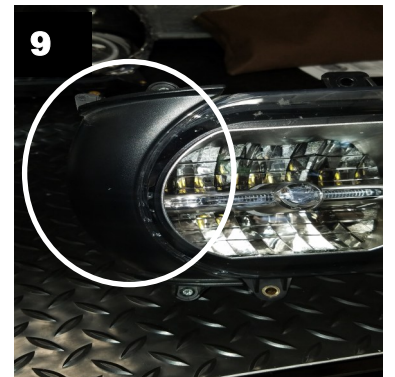
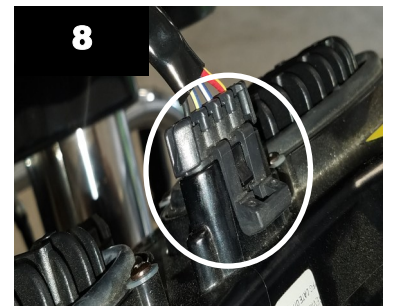
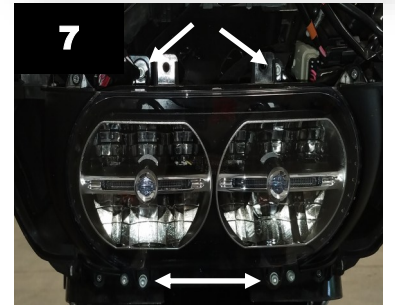
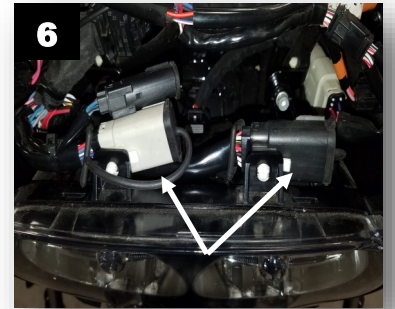


Questions? Email: info@CustomDynamics.com or Call us at: 1 (800) 382-1388 M-TH 8:30AM-5:30PM / FR 9:30AM-5:30PM EST

Installation Instructions - Page 2

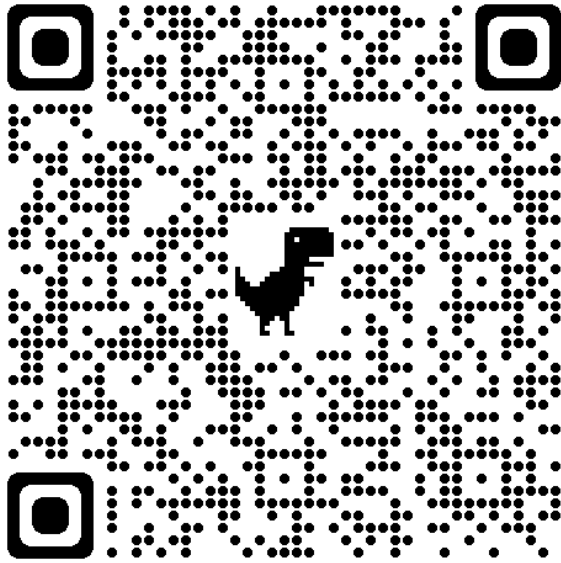
Installation Continued:

9. Locate the two data plugs that are on the top front of the factory headlight and press them away from their location. Shown in **Figure 6**.
10. Locate the (4) 5/16" socket head Allen bolts that secure the factory headlamp to the mounting plate. Shown in **Figure 7**. Remove four screws and unplug headlight. Shown in **Figure 8**.
11. Remove the vent deflectors (both sides) from the factory headlight using a T-25 torx driver. Shown in **Figure 9**.
12. Reattach the vent deflectors to your ProGLOW™ LED Headlight using a T-25 torx driver.
13. Route the PG-Y-59 harness through the mounting plate opening behind the headlight. Shown in **Figure 10**. Follow the OE wire harness and secure the PG-Y-59 harness with cable ties. Route under the gas tank to the battery compartment and connect to channel 1 of the ProGLOW™ Controller (**sold separately**). Shown in **Diagram on Page 3**.
14. Plug the ProGLOW™ LED Headlight into the factory plug and connect both ProGLOW™ halo harnesses to the PG-Y-59 harness. The ProGLOW™ controller (**sold separately**) power should be off when making these connections.
15. Attach to the factory mounting plate using the original 5/16" socket head Allen bolts.
16. If the Brake Signal Sync is turned on in the App, test the Brake Sync Channel 1 Override to ensure the Headlamp double x pattern does not turn Red when the Brake is applied. Shown in **Figure 11**.
17. Test the ProGLOW™ portion and the Hi/Low of the headlight for proper operation before reinstalling the outer fairing. Reinstall the outer fairing using the original hardware from steps 4 through 7.
18. Reinstall speaker grilles by applying light pressure. They should snap into place.
19. Reinstall factory vent by snapping into place.
20. Reinstall windshield using original hardware.
21. Test the Custom Dynamics® ProGLOW™ Road Glide LED Headlight for proper operation.
22. For proper aiming of the headlight Scan the **QR Code on Page 3**.



Installation Instructions - Page 3

Scan QR code for detailed instructions on aiming your headlight.



Note:

Use caution when connecting the mating ProGLOW™ accessory connectors, confirm the mating connector is connected correctly or damage will occur to the lighting accessories. The locking tab should slide onto the lock and lock into position. Shown in Figure 12.

